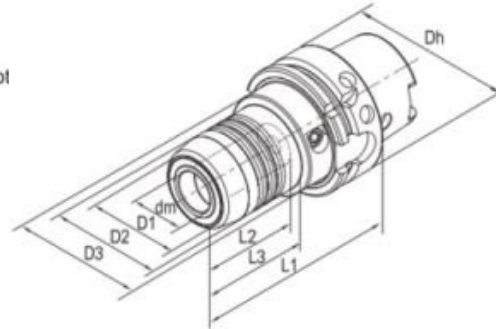
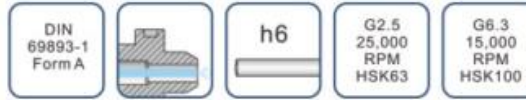


HARLINGEN®

HYDRAULIC EXPANSIONS CHUCK

- Super transmitted torque for high clamping reliability.
- Radial run-out less than 3 μ (system accuracy at 4xd)
- For clamping cutting tools with cylindric shank tolerance h6
- Flexible clamping range due to use of reducing sleeve for Various shank.
- Axial length adjustment available and max. adjustment travel 10mm.
- Ideal damping characteristics, resulting in optimum surface finish, increase cutter life time and spindle prot
- Reducing sleeve, Coolant pipe and coolant pipe Wrench optional.



Order No.	Modle	Shank	Size(mm)								Screw type	Screw Wrench	for Collets	Unit Price
			Dh	dm	D1	D2	D3	L1	L2	L3				
111-01-401	HSK63A-HCM06-70	HSK-A63	63	6	22	26	50	70	37	24	HCS005014C	TS5	-	US\$173.33
111-01-402	HSK63A-HCM08-70	HSK-A63	63	8	24	28	50	70	37	25	HCS006014C	TS5	-	US\$173.33
111-01-403	HSK63A-HCM10-80	HSK-A63	63	10	26	30	50	80	41	35	HCS008014C	TS5	-	US\$173.33
111-01-404	HSK63A-HCM12-85	HSK-A63	63	12	28	32	50	85	46	40	HCS008014C	TS5	HC12	US\$160.00
111-01-405	HSK63A-HCM16-90	HSK-A63	63	16	34	38	50	90	49	46	HCS008014C	TS5	-	US\$160.00
111-01-406	HSK63A-HCM20-90	HSK-A63	63	20	38	42	50	90	51	48	HCS008014C	TS5	HC20	US\$116.13
111-01-407	HSK63A-HCM25-120	HSK-A63	63	25	53	57	63	120	57	59	HCS012014C	TS6	-	US\$165.33
111-01-408	HSK63A-HCM32-125	HSK-A63	63	32	60	64	75	125	61	63	HCS012014C	TS6	HC32	US\$173.33
111-01-409	HSK63A-HCM14-85	HSK-A63	63	14	30	34	50	85	46	40	HCSO08014C	TS5	-	US\$160.00
111-01-410	HSK63A-HCM18-90	HSK-A63	63	18	36	40	50	90	49	47	HCSO08014C	TS5	-	US\$160.00
111-01-411	HSK63A-HCM06-150	HSK-A63	63	6	22	26	50	150	37	103	HCSO05014C	TS5	-	US\$286.67
111-01-412	HSK63A-HCM08-150	HSK-A63	63	8	24	28	50	150	37	104	HCSO06014C	TS5	-	US\$286.67
111-01-413	HSK63A-HCM10-150	HSK-A63	63	10	26	30	50	150	41	104	HCSO08014C	TS5	-	US\$286.67
111-01-414	HSK63A-HCM12-150	HSK-A63	63	12	28	32	50	150	46	105	HCSO08014C	TS5	HC12	US\$260.00
111-01-415	HSK63A-HCM14-150	HSK-A63	63	14	30	34	50	150	46	105	HCSO08014C	TS5	-	US\$260.00
111-01-416	HSK63A-HCM16-150	HSK-A63	63	16	34	38	50	150	49	106	HCSO08014C	TS5	-	US\$260.00

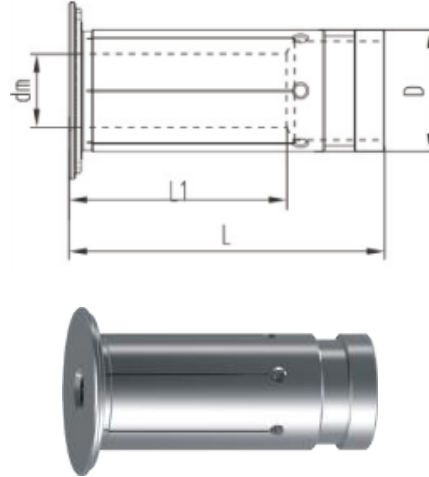
HARLINGEN®

111-01-417	HSK63A-HCM18-150	HSK-A63	63	18	36	40	50	150	49	107	HCSO08014C	TS5	-	US\$260.00
111-01-418	HSK63A-HCM20-150	HSK-A63	63	20	38	42	50	150	51	108	HCSO08014C	TS5	HC20	US\$230.67
111-01-419	HSK63A-HCM06-200	HSK-A63	63	6	22	26	50	200	37	153	HCSO05014C	TS5	-	US\$320.00
111-01-420	HSK63A-HCM08-200	HSK-A63	63	8	24	28	50	200	37	154	HCSO06014C	TS5	-	US\$320.00
111-01-421	HSK63A-HCM10-200	HSK-A63	63	10	26	30	50	200	41	154	HCSO08014C	TS5	-	US\$320.00
111-01-422	HSK63A-HCM12-200	HSK-A63	63	12	28	32	50	200	46	155	HCSO08014C	TS5	HC12	US\$286.67
111-01-423	HSK63A-HCM14-200	HSK-A63	63	14	30	34	50	200	46	155	HCSO08014C	TS5	-	US\$286.67
111-01-424	HSK63A-HCM16-200	HSK-A63	63	16	34	38	50	200	49	156	HCSO08014C	TS5	-	US\$286.67
111-01-425	HSK63A-HCM18-200	HSK-A63	63	18	36	40	50	200	49	157	HCSO08014C	TS5	-	US\$286.67
111-01-426	HSK63A-HCM20-200	HSK-A63	63	20	38	42	50	200	51	158	HCSO08014C	TS5	HC20	US\$257.33
111-01-601	HSK100A-HCM06-75	HSK-A100	100	6	22	26	50	75	37	26	HCS005014C	TS5	-	US\$233.33
111-01-602	HSK100A-HCM08-75	HSK-A100	100	8	24	28	50	75	37	26	HCS006014C	TS5	-	US\$233.33
111-01-603	HSK100A-HCM10-90	HSK-A100	100	10	26	30	50	90	41	42	HCS008014C	TS5	-	US\$233.33
111-01-604	HSK100A-HCM12-95	HSK-A100	100	12	28	32	50	95	46	47	HCS008014C	TS5	HC12	US\$213.33
111-01-605	HSK100A-HCM16-100	HSK-A100	100	16	34	38	50	100	49	53	HCS008014C	TS5	-	US\$213.33
111-01-606	HSK100A-HCM20-105	HSK-A100	100	20	38	42	50	105	51	51	HCS008014C	TS5	HC20	US\$181.33
111-01-607	HSK100A-HCM25-110	HSK-A100	100	25	53	57	63	110	57	62	HCS012014C	TS6	-	US\$213.33
111-01-608	HSK100A-HCM32-110	HSK-A100	100	32	60	64	75	110	61	62	HCS012014C	TS6	HC32	US\$223.33
111-01-609	HSK100A-HCM12-150	HSK-A100	100	12	28	32	50	150	46	102	HCSO08014C	TS5	HC12	US\$320.00
111-01-610	HSK100A-HCM20-150	HSK-A100	100	20	38	42	50	150	51	104	HCSO08014C	TS5	HC20	US\$288.00

REDUCING SLEEVE FOR HYDRAULIC EXPANSIONS CHUCK

- Radial run-out less than 5 μ .
- For clamping cutting tools with cylinderic shank tolerance h6.

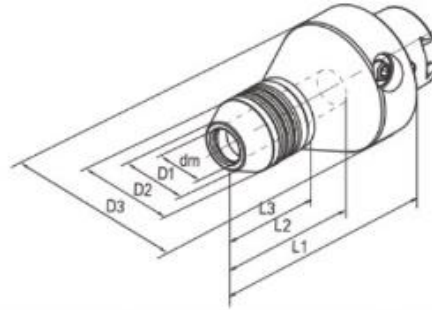
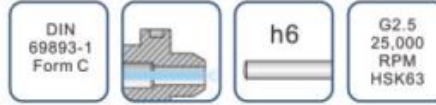
Order No.	Modle	Size (mm)				Unit Price
		dm	D	L1	L	
100-01-001	HC12-3	3	12	16.5	47.5	US\$29.70
100-01-002	HC12-4	4		16.5		US\$29.70
100-01-003	HC12-5	5		16.5		US\$29.70
100-01-004	HC12-6	6		24		US\$29.70
100-01-005	HC12-8	8		25.5		US\$29.70
100-01-006	HC20-3	3	20	17.5	52.5	US\$29.70
100-01-007	HC20-4	4		17.5		US\$27.00
100-01-008	HC20-5	5		17.5		US\$27.00
100-01-009	HC20-6	6		25.5		US\$27.00
100-01-010	HC20-7	7		28		US\$29.70
100-01-011	HC20-8	8		28		US\$27.00
100-01-012	HC20-9	9		32.5		US\$29.70
100-01-013	HC20-10	10		32.5		US\$27.00
100-01-014	HC20-11	11		36		US\$29.70
100-01-015	HC20-12	12		36		US\$27.00
100-01-016	HC20-13	13		36.5		US\$29.70
100-01-017	HC20-14	14		37		US\$29.70
100-01-018	HC20-15	15		37		US\$29.70
100-01-019	HC20-16	16		37.5		US\$27.00
100-01-020	HC32-6	6	32	25.5	63.5	US\$29.70
100-01-021	HC32-8	8		27.5		US\$29.70
100-01-022	HC32-10	10		30.5		US\$29.70
100-01-023	HC32-12	12		30.5		US\$29.70
100-01-024	HC32-14	14		32.5		US\$31.95
100-01-025	HC32-16	16		40.5		US\$29.70
100-01-026	HC32-18	18		40.5		US\$31.95
100-01-027	HC32-20	20		40.5		US\$29.70
100-01-028	HC32-25	25		48.5		US\$29.70



HARLINGEN®

PRECISION HYDRAULIC EXPANSIONS CHUCK

- Used on CNC tool grinding machine for grinding/sharpening of drill, reamer, end mill etc.
- High precision and Radial Run-out not more than 2 μ at 4d checking point.
- Super transmitted torque for high clamping reliability.
- For clamping cylinderic shank tolerance h6
- Can be operated frequently long time and keep good repeatability.
- Coolant pipe and coolant pipe Wrench optional.



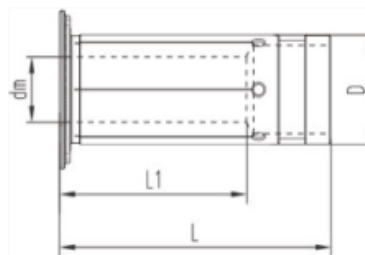
Order No.	Modle	Shank	Size(mm)							Wrench	for Collets	Unit Price
			dm	D1	D2	D3	L1	L2	L3			
111-01-001	HSK63C-HCM12-110M	HSK-C63	12	21.5	36.5	75	110	83	47	TS5	HC12..M	US\$369.67
111-01-002	HSK63C-HCM20-110M	HSK-C63	20	28	42	75	110	83	47	TS5	HC20..M	US\$330.00
111-01-003	HSK63C-HCM32-110M	HSK-C63	32	40	54	80	110	83	62.5	TS5	HC32..M	US\$366.67

PRECISION REDUCING SLEEVE FOR HYDRAULIC CHUCK

- Radial run-out less than 3μ.
- Used for grinding/sharpening of drill, reamer, end mill etc.
- For clamping cutting tools with cylinderic shank tolerance h6

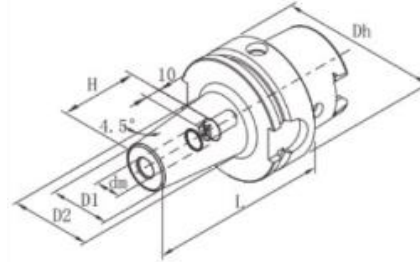
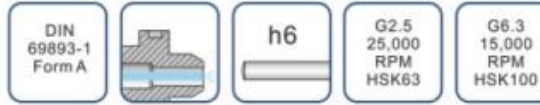


Order No.	Modle	Size (mm)				Unit Price
		dm	D	L1	L	
100-01-101	HC12-3M	3	12	16.5	47.5	US\$37.20
100-01-102	HC12-4M	4		16.5		US\$37.20
100-01-103	HC12-5M	5		16.5		US\$37.20
100-01-104	HC12-6M	6		24		US\$37.20
100-01-105	HC12-8M	8		25.5		US\$37.20
100-01-106	HC20-3M	3	20	17.5	52.5	US\$53.10
100-01-107	HC20-4M	4		17.5		US\$37.20
100-01-108	HC20-5M	5		17.5		US\$37.20
100-01-109	HC20-6M	6		25.5		US\$37.20
100-01-110	HC20-7M	7		28		US\$53.10
100-01-111	HC20-8M	8		28		US\$37.20
100-01-112	HC20-9M	9		32.5		US\$53.10
100-01-113	HC20-10M	10		32.5		US\$37.20
100-01-114	HC20-11M	11		36		US\$53.10
100-01-115	HC20-12M	12		36		US\$37.20
100-01-116	HC20-13M	13		36.5		US\$53.10
100-01-117	HC20-14M	14		37		US\$53.10
100-01-118	HC20-15M	15		37		US\$53.10
100-01-119	HC20-16M	16	37.5	US\$37.20		
100-01-120	HC32-6M	6	32	25.5	63.5	US\$37.20
100-01-121	HC32-8M	8		27.5		US\$37.20
100-01-122	HC32-10M	10		30.5		US\$37.20
100-01-123	HC32-12M	12		30.5		US\$37.20
100-01-124	HC32-14M	14		32.5		US\$53.10
100-01-125	HC32-16M	16		40.5		US\$37.20
100-01-126	HC32-18M	18		40.5		US\$53.10
100-01-127	HC32-20M	20		40.5		US\$37.20
100-01-128	HC32-25M	25		48.5		US\$37.20



SHRINK FIT CHUCK

- Made of high-temperature steel and fit for High frequency heating machine.
- For clamping cutting tools with cylinderic shank tolerance h6
- High tool-gripping strength and machining accuracy
- 360 degree concentric clamping without set screws, collets.
- Engineered to produce the high degree of balance available
- With indicating line for shank depth of cutter.
- Coolant pipe and coolant pipe Wrench optional.



Order No.	Modle	Shank	Size(mm)						Screw	Unit Price
			Dh	dm	D1	D2	L	H		
111-02-401	HSK63A-SFX03-80	HSK-A63	63	3	10	-	80	10	-	US\$97.67
111-02-402	HSK63A-SFX04-80	HSK-A63	63	4	10	-	80	12	-	US\$97.67
111-02-403	HSK63A-SFX05-80	HSK-A63	63	5	10	-	80	15	-	US\$97.67
111-02-404	HSK63A-SFX06-80	HSK-A63	63	6	21	27	80	36	S005014C	US\$88.33
111-02-405	HSK63A-SFX06-120	HSK-A63	63	6	21	27	120	36	S005014C	US\$96.67
111-02-406	HSK63A-SFX06-160	HSK-A63	63	6	21	32	160	36	S005014C	US\$98.67
111-02-407	HSK63A-SF08-80	HSK-A63	63	8	21	27	80	36	S006014C	US\$74.67
111-02-408	HSK63A-SF08-120	HSK-A63	63	8	21	27	120	36	S006014C	US\$83.33
111-02-409	HSK63A-SF08-160	HSK-A63	63	8	21	32	160	36	S006014C	US\$85.33
111-02-410	HSK63A-SF10-85	HSK-A63	63	10	24	32	85	42	S008014C	US\$74.67
111-02-411	HSK63A-SF10-120	HSK-A63	63	10	24	32	120	42	S008014C	US\$83.33
111-02-412	HSK63A-SF10-160	HSK-A63	63	10	24	34	160	42	S008014C	US\$85.33
111-02-413	HSK63A-SF12-90	HSK-A63	63	12	24	32	90	47	S008014C	US\$74.67
111-02-414	HSK63A-SF12-120	HSK-A63	63	12	24	32	120	47	S008014C	US\$83.33
111-02-415	HSK63A-SF12-160	HSK-A63	63	12	24	34	160	47	S008014C	US\$85.33
111-02-416	HSK63A-SF14-90	HSK-A63	63	14	27	34	90	47	S008014C	US\$74.67
111-02-417	HSK63A-SF14-120	HSK-A63	63	14	27	34	120	47	S008014C	US\$83.33
111-02-418	HSK63A-SF14-160	HSK-A63	63	14	27	42	160	47	S008014C	US\$85.33
111-02-419	HSK63A-SF16-95	HSK-A63	63	16	27	34	95	50	S012014C	US\$74.67
111-02-420	HSK63A-SF16-120	HSK-A63	63	16	27	34	120	50	S012014C	US\$83.33
111-02-421	HSK63A-SF16-160	HSK-A63	63	16	27	42	160	50	S012014C	US\$85.33
111-02-422	HSK63A-SF18-95	HSK-A63	63	18	33	42	95	50	S012014C	US\$74.67
111-02-423	HSK63A-SF18-120	HSK-A63	63	18	33	42	120	50	S012014C	US\$83.33
111-02-424	HSK63A-SF18-160	HSK-A63	63	18	33	51	160	50	S012014C	US\$85.33

HARLINGEN®

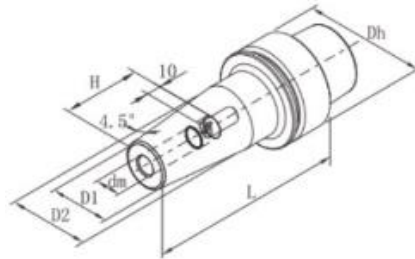
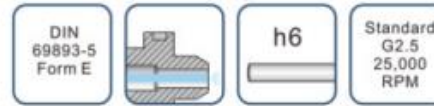
111-02-425	HSK63A-SF20-100	HSK-A63	63	20	33	42	100	52	S016016C	US\$74.67
111-02-426	HSK63A-SF20-120	HSK-A63	63	20	33	42	120	52	S016016C	US\$83.33
111-02-427	HSK63A-SF20-160	HSK-A63	63	20	33	51	160	52	S016016C	US\$85.33
111-02-428	HSK63A-SF25-115	HSK-A63	63	25	44	53	115	58	S016016C	US\$81.33
111-02-429	HSK63A-SF25-160	HSK-A63	63	25	44	60	160	58	S016016C	US\$85.33
111-02-601	HSK100A-SFX06-85	HSK-A100	100	6	21	27	85	36	S005014C	US\$114.67
111-02-602	HSK100A-SFX06-120	HSK-A100	100	6	21	27	120	36	S005014C	US\$123.33
111-02-603	HSK100A-SFX06-160	HSK-A100	100	6	21	32	160	36	S005014C	US\$131.33
111-02-604	HSK100A-SF08-85	HSK-A100	100	8	21	27	85	36	S006014C	US\$96.67
111-02-605	HSK100A-SF08-120	HSK-A100	100	8	21	27	120	36	S006014C	US\$105.33
111-02-606	HSK100A-SF-160	HSK-A100	100	8	21	32	160	36	S006014C	US\$113.33
111-02-607	HSK100A-SF10-90	HSK-A100	100	10	24	32	90	42	S008014C	US\$96.67
111-02-608	HSK100A-SF10-120	HSK-A100	100	10	24	32	120	42	S008014C	US\$105.33
111-02-609	HSK100A-SF10-160	HSK-A100	100	10	24	34	160	42	S008014C	US\$113.33
111-02-610	HSK100A-SF12-95	HSK-A100	100	12	24	32	95	47	S008014C	US\$96.67
111-02-611	HSK100A-SF12-120	HSK-A100	100	12	24	32	120	47	S008014C	US\$105.33
111-02-612	HSK100A-SF12-160	HSK-A100	100	12	24	34	160	47	S008014C	US\$113.33
111-02-613	HSK100A-SF14-95	HSK-A100	100	14	27	34	95	47	S008014C	US\$96.67
111-02-614	HSK100A-SF14-120	HSK-A100	100	14	27	34	120	47	S008014C	US\$105.33
111-02-615	HSK100A-SF14-160	HSK-A100	100	14	27	42	160	47	S008014C	US\$113.33
111-02-616	HSK100A-SF16-100	HSK-A100	100	16	27	34	100	50	S012014C	US\$96.67
111-02-617	HSK100A-SF16-120	HSK-A100	100	16	27	34	120	50	S012014C	US\$105.33
111-02-618	HSK100A-SF16-160	HSK-A100	100	16	27	42	160	50	S012014C	US\$113.33
111-02-619	HSK100A-SF18-100	HSK-A100	100	18	33	42	100	50	S012014C	US\$96.67
111-02-620	HSK100A-SF18-120	HSK-A100	100	18	33	42	120	50	S012014C	US\$105.33
111-02-621	HSK100A-SF18-160	HSK-A100	100	18	33	51	160	50	S012014C	US\$113.33
111-02-622	HSK100A-SF20-105	HSK-A100	100	20	33	42	105	52	S016016C	US\$96.67
111-02-623	HSK100A-SF20-120	HSK-A100	100	20	33	42	120	52	S016016C	US\$105.33
111-02-624	HSK100A-SF20-160	HSK-A100	100	20	33	51	160	52	S016016C	US\$113.33

ADD: C-8F NO.6, HANGKONG ROAD, FENGDE INTERNATIONAL PLAZA, CHENGDU, SICHUAN, CHINA
 TEL: 028-86741971 86741739 FAX: 028-86756837 86750017
 E-MAIL: sales@sctools.com service@sctools.com

111-02-625	HSK100A-SF25-115	HSK-A100	100	25	44	53	115	58	S016016C	US\$105.33
111-02-626	HSK100A-SF25-160	HSK-A100	100	25	44	60	160	58	S016016C	US\$118.67
111-02-627	HSK100A-SF32-120	HSK-A100	100	32	44	53	120	58	S016016C	US\$108.00
111-02-628	HSK100A-SF32-160	HSK-A100	100	32	44	60	160	58	S016016C	US\$123.33

SHRINK FIT CHUCK

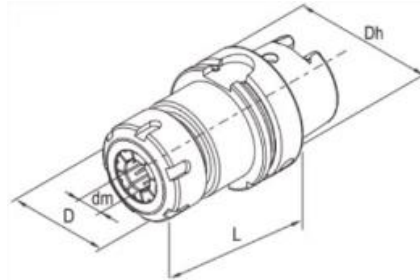
- Used for high speed spindles.
- For clamping cutting tools with cylindric shank tolerance h6
- High tool-gripping strength and machining accuracy
- With indicating line for shank depth of cutter.
- Coolant pipe and coolant pipe Wrench optional.



Order No.	Modle	Shank	Size(mm)						Screw	Unit Price
			Dh	dm	D1	D2	L	H		
113-02-201	HSK40E-SFX03-60	HSK-E40	40	3	10	-	60	-	-	US\$97.67
113-02-202	HSK40E-SFX04-60	HSK-E40	40	4	10	-	60	-	-	US\$97.67
113-02-203	HSK40E-SFX05-60	HSK-E40	40	5	10	-	60	-	-	US\$97.67
113-02-204	HSK40E-SFX06-80	HSK-E40	40	6	21	27	80	36	S005014C	US\$88.33
113-02-205	HSK40E-SF08-80	HSK-E40	40	8	21	27	80	36	S006014C	US\$74.67
113-02-206	HSK40E-SF10-80	HSK-E40	40	10	24	32	80	42	S008014C	US\$74.67
113-02-207	HSK40E-SF12-90	HSK-E40	40	12	24	32	90	47	S008014C	US\$74.67
113-02-208	HSK40E-SF14-90	HSK-E40	40	14	27	34	90	47	S008014C	US\$74.67
113-02-209	HSK40E-SF16-90	HSK-E40	40	16	27	34	90	50	S012014C	US\$74.67

ER COLLET CHUCK

- Radial run-out less than 0.01mm.
- Constructed of alloy steel for long, durable service life.
- For clamping tools with plain shank in collets to DIN6499.
- Supplied with high performance clamping nut.
- Coolant pipe and coolant pipe Wrench optional.

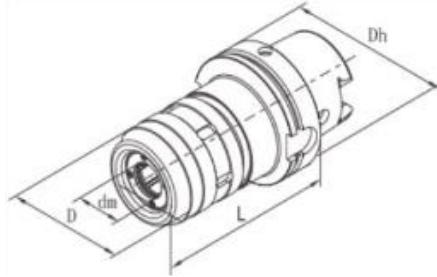


Order No.	Modle	Shank	for Collets	Size(mm)				Nuts	Screw	Wrench	Unit Price
				Dh	dm	D	L				
111-04-401	HSK63A-ER11-75	HSK-A63	ER11	63	0.5-7	19	75	CN11HS	SER11C	W17D	US\$59.60
111-04-402	HSK63A-ER16-80	HSK-A63	ER16	63	0.5-10	28	80	CN16HS	SER16C	W25D	US\$59.60
111-04-403	HSK63A-ER16-100	HSK-A63	ER16	63	0.5-10	28	100	CN16HS	SER16C	W25D	US\$64.33
111-04-404	HSK63A-ER16-120	HSK-A63	ER16	63	0.5-10	28	120	CN16HS	SER16C	W25D	US\$70.00
111-04-405	HSK63A-ER20-80	HSK-A63	ER20	63	1.0-13	34	80	CN20HS	SER20C	W30D	US\$59.60
111-04-406	HSK63A-ER20-100	HSK-A63	ER20	63	1.0-13	34	100	CN20HS	SER20C	W30D	US\$64.33
111-04-407	HSK63A-ER20-120	HSK-A63	ER20	63	1.0-13	34	120	CN20HS	SER20C	W30D	US\$70.00
111-04-408	HSK63A-ER25-80	HSK-A63	ER25	63	1.0-16	42	80	CN25B	S008014C	YER25B	US\$58.53
111-04-409	HSK63A-ER25-100	HSK-A63	ER25	63	1.0-16	42	100	CN25B	SER25C	YER25B	US\$64.33
111-04-410	HSK63A-ER25-120	HSK-A63	ER25	63	1.0-16	42	120	CN25B	SER25C	YER25B	US\$70.00
111-04-411	HSK63A-ER32-80	HSK-A63	ER32	63	2.0-20	50	80	CN32B	S008014C	YER32B	US\$61.33
111-04-412	HSK63A-ER32-100	HSK-A63	ER32	63	2.0-20	50	100	CN32B	SER32C	YER32B	US\$67.33
111-04-413	HSK63A-ER32-120	HSK-A63	ER32	63	2.0-20	50	120	CN32B	SER32C	YER32B	US\$74.67
111-04-414	HSK63A-ER40-80	HSK-A63	ER40	63	3.0-26	63	80	CN40B	-	YER40B	US\$65.33
111-04-415	HSK63A-ER40-100	HSK-A63	ER40	63	3.0-26	63	100	CN40B	SER40C	YER40B	US\$71.33
111-04-416	HSK63A-ER40-120	HSK-A63	ER40	63	3.0-26	63	120	CN40B	SER40C	YER40B	US\$78.67
111-04-601	HSK100A-ER16-100	HSK-A100	ER16	100	0.5-10	28	100	CN16HS	SER16C	W25D	US\$100.00
111-04-602	HSK100A-ER16-160	HSK-A100	ER16	100	0.5-10	28	160	CN16HS	SER16C	W25D	US\$118.67
111-04-603	HSK100A-ER20-100	HSK-A100	ER20	100	1.0-13	34	100	CN20HS	SER20C	W30D	US\$102.67
111-04-604	HSK100A-ER20-160	HSK-A100	ER20	100	1.0-13	34	160	CN20HS	SER20C	W30D	US\$120.00
111-04-605	HSK100A-ER25-100	HSK-A100	ER25	100	1.0-16	42	100	CN25B	SER25C	YER25B	US\$106.67

111-04-606	HSK100A-ER25-160	HSK-A100	ER25	100	1.0-16	42	160	CN25B	SER25C	YER25B	US\$124.00
111-04-607	HSK100A-ER32-100	HSK-A100	ER32	100	2.0-20	50	100	CN32B	SER32C	YER32B	US\$108.67
111-04-608	HSK100A-ER32-160	HSK-A100	ER40	100	3.0-26	63	160	CN32B	SER40C	YER40B	US\$126.67
111-04-609	HSK100A-ER40-100	HSK-A100	ER40	100	3.0-26	63	100	CN40B	SER40C	YER40B	US\$112.00
111-04-610	HSK100A-ER40-120	HSK-A100	ER40	100	3.0-26	63	120	CN40B	SER40C	YER40B	US\$121.33
111-04-611	HSK100A-ER40-160	HSK-A100	ER40	100	3.0-26	63	160	CN40B	SER40C	YER40B	US\$130.67

POWER MILLING CHUCK

- Very high clamping force and High stability improving surface quality and tool life time.
- Optimised design resulting in Ideal damping characteristics and low vibration.
- Radial run-out less than 0.01mm.
- For clamping cutting tools with cylinderic shank tolerance h6
- Flexible clamping range by using reducing sleeve for various tool shank.
- Reducing sleeve ,Coolant pipe and coolant pipe wrench optional.



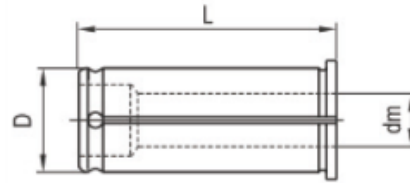
Order No.	Modle	Shank	for Collets	Size(mm)				Wrench	Unit Price
				Dh	dm	D	L		
111-03-401	HSK63A-C20-105	HSK-A63	C20	63	20	52	105	WC20	US\$130.00
111-03-402	HSK63A-C25-110	HSK-A63	C25	63	25	62	110	WC25	US\$130.00
111-03-403	HSK63A-C32-115	HSK-A63	C32	63	32	72	115	WC32	US\$130.00
111-03-601	HSK100A-C20-110	HSK-A100	C20	100	20	52	110	WC20	US\$146.67
111-03-602	HSK100A-C25-115	HSK-A100	C25	100	25	62	115	WC25	US\$146.67
111-03-603	HSK100A-C32-120	HSK-A100	C32	100	32	72	120	WC32	US\$160.00
111-03-604	HSK100A-C42-120	HSK-A100	C42	100	42	87	120	WC42	US\$193.33

REDUCING SLEEVE FOR POWER MILLING CHUCK

- For drill, milling, reaming. • Radial run-out less than 0.01mm
- For clamping cutting tools with cylindric shank tolerance h6



Order No.	Modle	Size (mm)			Unit Price
		dm	D	L	
100-03-001	C20-3	3	20	55	US\$6.57
100-03-002	C20-4	4			US\$6.57
100-03-003	C20-5	5			US\$6.57
100-03-004	C20-6	6			US\$6.57
100-03-005	C20-8	8			US\$6.57
100-03-006	C20-10	10			US\$6.57
100-03-007	C20-12	12			US\$6.57
100-03-008	C20-14	14			US\$6.57
100-03-009	C20-16	16			US\$6.57
100-03-010	C25-4	4			25
100-03-011	C25-5	5	US\$6.57		
100-03-012	C25-6	6	US\$6.57		
100-03-013	C25-8	8	US\$6.57		
100-03-014	C25-10	10	US\$6.57		
100-03-015	C25-12	12	US\$6.57		
100-03-016	C25-14	14	US\$6.57		
100-03-017	C25-16	16	US\$6.57		
100-03-018	C25-18	18	US\$6.57		
100-03-019	C25-20	20	US\$6.57		

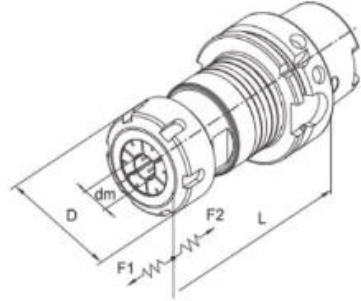


HARLINGEN®

100-03-020	C32-6	6	32	65	US\$6.90
100-03-021	C32-8	8			US\$6.90
100-03-022	C32-10	10			US\$6.90
100-03-023	C32-12	12			US\$6.90
100-03-024	C32-14	14			US\$6.90
100-03-025	C32-16	16			US\$6.90
100-03-026	C32-18	18			US\$6.90
100-03-027	C32-20	20			US\$6.90
100-03-028	C32-25	25			US\$6.90
100-03-029	C42-6	6			42
100-03-030	C42-8	8	US\$15.75		
100-03-031	C42-10	10	US\$15.75		
100-03-032	C42-12	12	US\$15.75		
100-03-033	C42-14	14	US\$15.75		
100-03-034	C42-16	16	US\$15.75		
100-03-035	C42-18	18	US\$15.75		
100-03-036	C42-20	20	US\$15.75		
100-03-037	C42-25	25	US\$15.75		
100-03-038	C42-32	32	US\$15.75		

AUTOMATIC MICRO-COMPENSATION TAPPING CHUCK

- Compensation capacity $\pm 0.5\text{mm}$.
- Precision producing true thread with quality surface.
- Improving effectiveness and tap life time.
- For NC machines and machining center.
- For right hand and left hand thread.

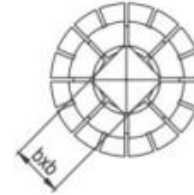
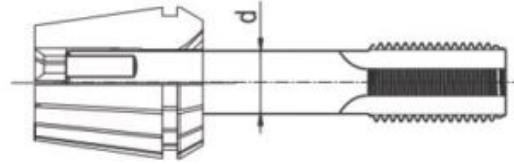


Order No.	Model	SHANK	capacity	Size(mm)					Nuts	for Collets	Unit Price
				D	dm	L	F1	F2			
111-13-401	HSK63A-V20-100	HSK-A63	M4-M12	34	3-10	100	0.5	0.5	CN20HS	ER20	US\$98.67
111-13-601	HSK100A-V20-110	HSK-A100	(No.8-7/16")	34	3-10	110	0.5	0.5	CN20HS	ER20	US\$140.00
111-13-402	HSK63A-V32-120	HSK-A63	M4-M20	50	3-16	120	0.5	0.5	CN32B	ER32	US\$98.67
111-13-602	HSK100A-V32-130	HSK-A100	(No.8-3/4")	50	3-16	130	0.5	0.5	CN32B	ER32	US\$140.00

HARLINGEN®

ER TAP COLLET

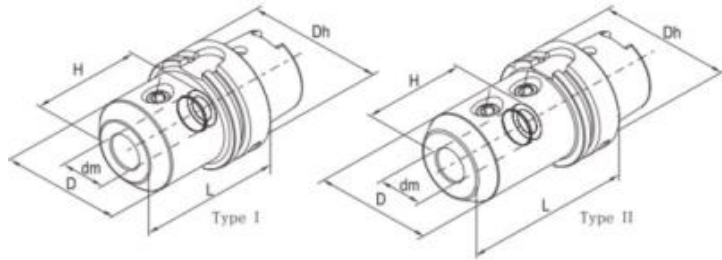
- Special design with internal square drive for machine taps.



Order No.	Modle	For taps					Unit Price
		Shank d(mm)	Square b(mm)	ISO529/IS O2283	DIN374/DI N376	JISB4430	
100-13-201	ER20-6.3B5	6.3	5	M8	M8	M6/M8	US\$5.10
100-13-202	ER20-7B5.5	7	5.5	-	M10	M10	US\$5.10
100-13-203	ER20-8B6.3	8	6.3	M10	-	-	US\$5.10
100-13-204	ER20-8.5B6.5	8.5	6.5	-	-	M12	US\$5.10
100-13-205	ER20-9B7.1	9	7.1	M12	M12	-	US\$5.10
100-13-301	ER32-6.3B5	6.3	5	M8	M8	M6/M8	US\$5.43
100-13-302	ER32-7B5.5	7	5.5	-	M10	M10	US\$5.43
100-13-303	ER32-8B6.3	8	6.3	M10	-	-	US\$5.43
100-13-304	ER32-8.5B6.5	8.5	6.5	-	-	M12	US\$5.43
100-13-305	ER32-9B7.1	9	7.1	M12	M12	-	US\$5.43
100-13-306	ER32-12B9	12	9	-	M16	-	US\$5.43
100-13-307	ER32-12.5B10	12.5	10	M16	-	M16	US\$5.43
100-13-308	ER32-14B11.2	14	11.2	M18/M20	M18	M18	US\$5.43
100-13-309	ER32-15B12	15	12	-	-	M20	US\$5.43
100-13-310	ER32-16B12	16	12	-	M20	-	US\$5.43

SIDE LOCK HOLDER

- For clamping tools with weldon shank to DIN1835 form B and DIN6535 form HB.
- Coolant pipe and coolant pipe Wrench optional.

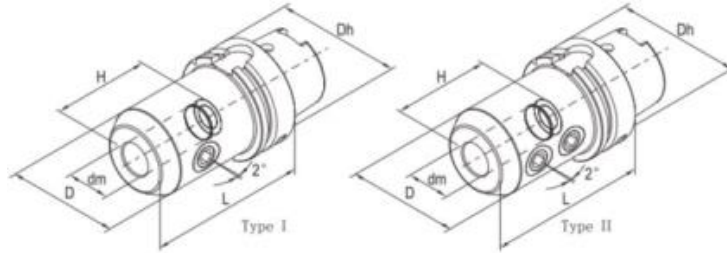


Order No.	Modle	Shank	Size(mm)					Screw type	Type	Unit Price
			Dh	dm	D	L	H			
111-05-401	HSK63A-XP16-80	HSK-A63	63	16	48	80	52	SXP16	I	US\$79.33
111-05-402	HSK63A-XP20-80	HSK-A63	63	20	50	80	54	SXP20	I	US\$79.33
111-05-403	HSK63A-XP25-110	HSK-A63	63	25	60	110	66	SXP25	II	US\$86.67
111-05-404	HSK63A-XP32-110	HSK-A63	63	32	68	110	70	SXP32	II	US\$86.67
111-05-601	HSK100A-XP16-100	HSK-A100	100	16	48	100	52	SXP16	I	US\$89.67
111-05-602	HSK100A-XP20-100	HSK-A100	100	20	50	100	54	SXP20	I	US\$89.67
111-05-603	HSK100A-XP25-100	HSK-A100	100	25	60	100	66	SXP25	II	US\$89.67
111-05-604	HSK100A-XP32-100	HSK-A100	100	32	68	100	66	SXP32	II	US\$94.67
111-05-605	HSK100A-XP40-120	HSK-A100	100	40	84	120	80	SXP32	II	US\$100.00
111-05-606	HSK100A-XP40-160	HSK-A100	100	40	84	160	80	SXP32	II	US\$121.33

HARLINGEN®

2° SIDE LOCK HOLDER

- For clamping tools with parallel shank and inclined clamping flat(2°)
DIN1835 form E and DIN6535 form HE.
- Coolant pipe and coolant pipe Wrench optional.

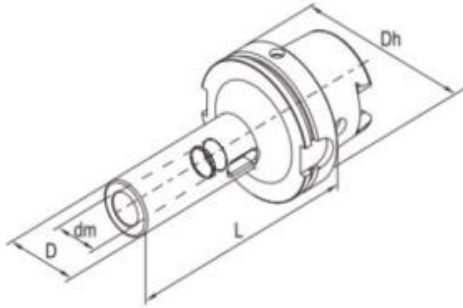


Order No.	Modle	Shank	Size(mm)					Screw type	Screw type	Type	Unit Price
			Dh	dm	D	L	H				
111-05-405	HSK63A-XPD16-100	HSK-A63	63	16	48	100	52	SXP16	S012014C	I	US\$91.20
111-05-406	HSK63A-XPD20-100	HSK-A63	63	20	52	100	54	SXP20	S020016C	I	US\$91.20
111-05-407	HSK63A-XPD25-110	HSK-A63	63	25	65	110	59	SXP25	S020016C	II	US\$99.67
111-05-408	HSK63A-XPD32-110	HSK-A63	63	32	72	110	63	SXP32	S020016C	II	US\$99.67
111-05-607	HSK100A-XPD16-100	HSK-A100	100	16	48	100	52	SXP16	S012014C	I	US\$103.07
111-05-608	HSK100A-XPD20-110	HSK-A100	100	20	52	110	54	SXP20	S020016C	I	US\$103.07
111-05-609	HSK100A-XPD25-120	HSK-A100	100	25	65	120	59	SXP25	S020016C	II	US\$111.20
111-05-610	HSK100A-XPD32-120	HSK-A100	100	32	72	120	63	SXP32	S020016C	II	US\$112.33

HARLINGEN®

MORSE TAPER HOLDER WITH TANG

• For clamping tools with MT taper shank with tang.



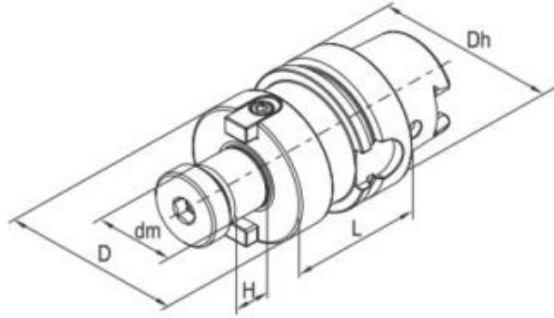
DIN
69893-1
Form A

Standard
G6.3
8,000
RPM

Order No.	Modle	Shank	Morse taper	Capacity (φmm)	Size(mm)				Unit Price
					Dh	D	dm	L	
111-06-401	HSK63A-M1-100	HSK-A63	MT1	3-14	63	25	12.065	100	US\$60.67
111-06-402	HSK63A-M2-120	HSK-A63	MT2	14.25-23.0	63	32	17.780	120	US\$60.67
111-06-403	HSK63A-M3-140	HSK-A63	MT3	23.25-31.75	63	40	23.825	140	US\$60.67
111-06-404	HSK63A-M4-160	HSK-A63	MT4	32.0-50.5	63	48	31.267	160	US\$64.00
111-06-601	HSK100A-M1-110	HSK-A100	MT1	3-14	100	25	12.065	110	US\$100.00
111-06-602	HSK100A-M2-120	HSK-A100	MT2	14.25-23.0	100	32	17.780	120	US\$100.00
111-06-603	HSK100A-M3-150	HSK-A100	MT3	23.25-31.75	100	40	23.825	150	US\$116.67
111-06-604	HSK100A-M4-170	HSK-A100	MT4	32.0-50.5	100	48	31.267	170	US\$128.00
111-06-605	HSK100A-M5-200	HSK-A100	MT5	51-76	100	63	44.399	200	US\$150.00

SHELL END MILL ARBOR

- For clamping shell end mill and milling cutter.

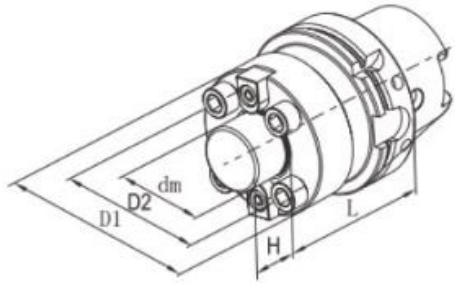


Order No.	Modle	Shank	Size(mm)					Screw	Key	Screw	Unit Price
			Dh	dm	D	L	H				
111-07-401	HSK63A-XMB16-50	HSK-A63	63	16	34	50	17	MS08030	JC08017	MS03008	US\$59.33
111-07-402	HSK63A-XMB16-100	HSK-A63	63	16	34	100	17	MS08030	JC08017	MS03008	US\$61.33
111-07-403	HSK63A-XMB22-50	HSK-A63	63	22	42	50	19	MS10030	JC10021	MS04010	US\$59.33
111-07-404	HSK63A-XMB22-100	HSK-A63	63	22	42	100	19	MS10030	JC10021	MS04010	US\$61.33
111-07-405	HSK63A-XMB27-60	HSK-A63	63	27	60	60	21	SXM27	JC12023	MS05016	US\$59.33
111-07-406	HSK63A-XMB27-100	HSK-A63	63	27	60	100	21	SXM27	JC12023	MS05016	US\$61.33
111-07-407	HSK63A-XMB32-60	HSK-A63	63	32	78	60	24	SXM32	JC14020	MS06020	US\$59.33
111-07-408	HSK63A-XMB32-100	HSK-A63	63	32	78	100	24	SXM32	JC14020	MS06020	US\$61.33
111-07-409	HSK63A-XMB40-60	HSK-A63	63	40	89	60	27	SXM40	JC16030	MS08020	US\$65.33
111-07-601	HSK100A-XMB22-50	HSK-A100	100	22	42	50	19	MS10030	JC10021	MS04010	US\$92.00
111-07-602	HSK100A-XMB22-100	HSK-A100	100	22	42	100	19	MS10030	JC10021	MS04010	US\$101.33
111-07-603	HSK100A-XMB27-50	HSK-A100	100	27	60	50	21	SXM27	JC12023	MS05016	US\$92.00
111-07-604	HSK100A-XMB27-100	HSK-A100	100	27	60	100	21	SXM27	JC12023	MS05016	US\$101.33
111-07-605	HSK100A-XMB32-50	HSK-A100	100	32	78	50	24	SXM32	JC14020	MS06020	US\$92.00
111-07-606	HSK100A-XMB32-100	HSK-A100	100	32	78	100	24	SXM32	JC14020	MS06020	US\$101.33
111-07-607	HSK100A-XMB40-60	HSK-A100	100	40	89	60	27	SXM40	KXM40	MS08020	US\$108.00
111-07-608	HSK100A-XMB40-100	HSK-A100	100	40	89	100	27	SXM40	KXM40	MS08020	US\$112.00

HARLINGEN®

FACE MILLING CUTTER HOLDER

- For clamping face milling cutter with 4 holes.
- Increased collar contact surface.
- Suppled with lock screws.

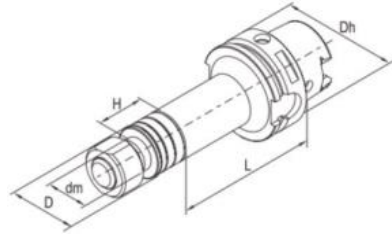


Order No.	Modle	Shank	Size(mm)					Screw	Key	Screw	Unit Price
			dm	D1	D2	L	H				
111-09-601	HSK100A-XMC40-75	HSK-A100	40	89	66.7	75	27	MS12045(4)	KXM40	MS08020	US\$128.67
111-09-602	HSK100A-XMC60-75	HSK-A100	60	129	101.6	75	38	MS16045(4)	KXMC60	MS10025	US\$160.00

HARLINGEN®

SLOTING CUTTER HOLDER

- For clamping saws and side milling cutter.
- Furnished complete with assorted spacers, nut and key.

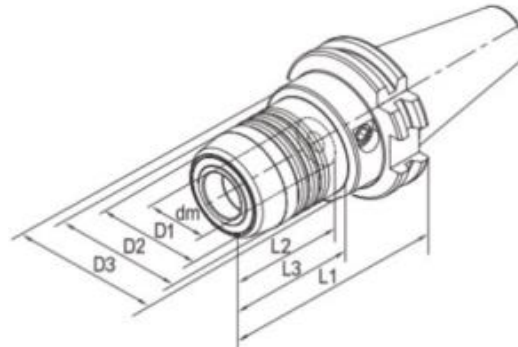
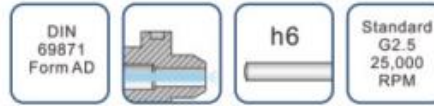


Order No.	Modle	Shank	Size(mm)					Nuts	Washer	Key	Unit Price
			Dh	dm	D	L	H				
111-10-401	HSK63A-XS13-75	HSK-A63	63	13	20	75	30	MXS13	SD13	-	US\$59.33
111-10-402	HSK63A-XS16-90	HSK-A63	63	16	26	90	30	MXS16	SD16	JA04020	US\$59.33
111-10-403	HSK63A-XS16-120	HSK-A63	63	16	26	120	30	MXS16	SD16	JA04020	US\$63.33
111-10-404	HSK63A-XS22-90	HSK-A63	63	22	34	90	30	MXS22	SD22	JA06020	US\$61.33
111-10-405	HSK63A-XS22-135	HSK-A63	63	22	34	135	30	MXS22	SD22	JA06020	US\$65.33
111-10-406	HSK63A-XS27-90	HSK-A63	63	27	40	90	30	MXS27	SD27	JA07022	US\$61.33
111-10-407	HSK63A-XS27-135	HSK-A63	63	27	40	135	30	MXS27	SD27	JA07022	US\$65.33
111-10-408	HSK63A-XS32-90	HSK-A63	63	32	46	90	30	MXS32	SD32	JA08022	US\$61.33
111-10-409	HSK63A-XS32-135	HSK-A63	63	32	46	135	30	MXS32	SD32	JA08022	US\$65.33
111-10-601	HSK100A-XS13-75	HSK-A100	100	13	20	75	30	MXS13	SD13	-	US\$92.00
111-10-602	HSK100A-XS16-90	HSK-A100	100	16	26	90	30	MXS16	SD16	JA04020	US\$94.67
111-10-603	HSK100A-XS16-120	HSK-A100	100	16	26	120	30	MXS16	SD16	JA04020	US\$105.33
111-10-604	HSK100A-XS22-90	HSK-A100	100	22	34	90	30	MXS22	SD22	JA06020	US\$94.67
111-10-605	HSK100A-XS22-135	HSK-A100	100	22	34	135	30	MXS22	SD22	JA06020	US\$105.33
111-10-606	HSK100A-XS27-90	HSK-A100	100	27	40	90	30	MXS27	SD27	JA07022	US\$94.67
111-10-607	HSK100A-XS27-135	HSK-A100	100	27	40	135	30	MXS27	SD27	JA07022	US\$105.33
111-10-608	HSK100A-XS32-90	HSK-A100	100	32	46	90	30	MXS32	SD32	JA08022	US\$94.67
111-10-609	HSK100A-XS32-135	HSK-A100	100	32	46	135	30	MXS32	SD32	JA08022	US\$105.33
111-10-610	HSK100A-XS40-90	HSK-A100	100	40	55	90	30	MXS40	SD40	JA010025	US\$94.67
111-10-611	HSK100A-XS40-135	HSK-A100	100	40	55	135	30	MXS40	SD40	JA010025	US\$105.33

HARLINGEN®

HYDRAULIC EXPANSIONS CHUCK

- Super transmitted torque for high clamping reliability.
- Radial run-out less than 3 μ (system accuracy at 4xd)
- For clamping cutting tools with cylindric shank tolerance h6
- Flexible clamping range due to use of reducing sleeve for Various shank.
- Axial length adjustment available and max. adjustment travel 10mm.
- Ideal damping characteristics, resulting in optimum surface finish, increase cutter life time and spindle protection.



Order No.	Modle	Shank	Size(mm)							Screw	Screw wrench	for Collets	Unit Price
			dm	D1	D2	D3	L1	L2	L3				
132-01-401	JT40-HCM06-80.5	SK40-AD	6	22	26	50	80.5	37	29.5	HCS005014C	TS5	-	US\$158.40
132-01-402	JT40-HCM08-80.5	SK40-AD	8	24	28	50	80.5	37	30	HCS006014C	TS5	-	US\$158.40
132-01-403	JT40-HCM10-80.5	SK40-AD	10	26	30	50	80.5	41	31	HCS008014C	TS5	-	US\$158.40
132-01-404	JT40-HCM12-80.5	SK40-AD	12	28	32	50	80.5	46	31.5	HCS008014C	TS5	HC12	US\$128.00
132-01-405	JT40-HCM16-80.5	SK40-AD	16	34	38	50	80.5	49	33	HCS008014C	TS5	-	US\$128.00
132-01-406	JT40-HCM20-80.5	SK40-AD	20	38	42	50	80.5	51	34	HCS008014C	TS5	HC20	US\$87.00
132-01-407	JT40-HCM25-80.5	SK40-AD	25	53	55	66	80.5	57	22	HCS012014C	TS6	-	US\$128.00



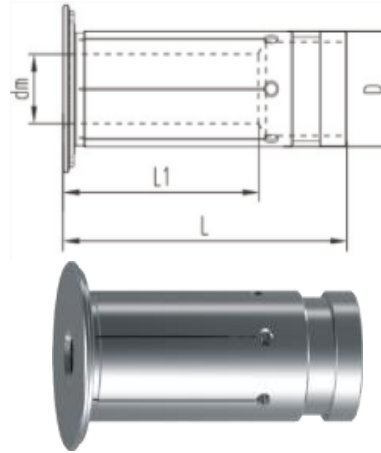
132-01-408	JT40-HCM32-80.5	SK40-AD	32	60	63	80	80.5	61	25.5	HCS012014C	TS6	HC32	US\$144.00
132-01-501	JT50-HCM06-80.5	SK50-AD	6	22	26	50	80.5	37	29.5	HCS005014C	TS5	-	US\$258.00
132-01-502	JT50-HCM08-80.5	SK50-AD	8	24	28	50	80.5	37	30	HCS006014C	TS5	-	US\$258.00
132-01-503	JT50-HCM10-80.5	SK50-AD	10	26	30	50	80.5	41	31	HCS008014C	TS5	-	US\$258.00
132-01-504	JT50-HCM12-80.5	SK50-AD	12	28	32	50	80.5	46	31.5	HCS008014C	TS5	HC12	US\$216.67
132-01-505	JT50-HCM16-80.5	SK50-AD	16	34	38	50	80.5	49	34	HCS008014C	TS5	-	US\$216.67
132-01-506	JT50-HCM20-80.5	SK50-AD	20	38	42	50	80.5	51	34	HCS008014C	TS5	HC20	US\$140.40
132-01-507	JT50-HCM25-80.5	SK50-AD	25	53	57	66	80.5	57	34	HCS012014C	TS6	-	US\$216.67
132-01-508	JT50-HCM32-80.5	SK50-AD	32	60	64	72	80.5	61	34	HCS012014C	TS6	HC32	US\$234.00

ADD: C-8F NO.6, HANGKONG ROAD, FENGDE INTERNATIONAL PLAZA, CHENGDU, SICHUAN, CHINA
 TEL: 028-86741971 86741739 FAX: 028-86756837 86750017
 E-MAIL: sales@sctools.com service@sctools.com

REDUCING SLEEVE FOR HYDRAULIC EXPANSIONS CHUCK

- Radial run-out less than 5μ.
- For clamping cutting tools with cylinderic shank tolerance h6.

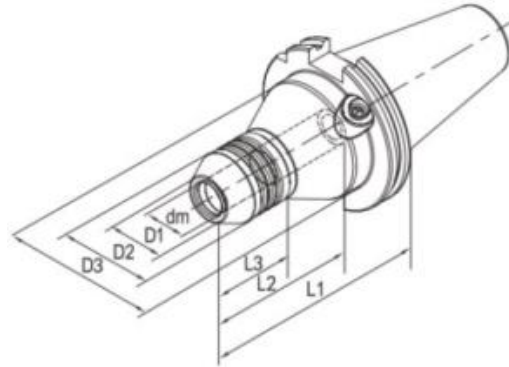
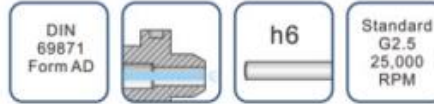
Order No.	Modle	Size (mm)				Unit Price
		dm	D	L1	L	
100-01-001	HC12-3	3	12	16.5	47.5	US\$29.70
100-01-002	HC12-4	4		16.5		US\$29.70
100-01-003	HC12-5	5		16.5		US\$29.70
100-01-004	HC12-6	6		24		US\$29.70
100-01-005	HC12-8	8		25.5		US\$29.70
100-01-006	HC20-3	3	20	17.5	52.5	US\$29.70
100-01-007	HC20-4	4		17.5		US\$27.00
100-01-008	HC20-5	5		17.5		US\$27.00
100-01-009	HC20-6	6		25.5		US\$27.00
100-01-010	HC20-7	7		28		US\$29.70
100-01-011	HC20-8	8		28		US\$27.00
100-01-012	HC20-9	9		32.5		US\$29.70
100-01-013	HC20-10	10		32.5		US\$27.00
100-01-014	HC20-11	11		36		US\$29.70
100-01-015	HC20-12	12		36		US\$27.00
100-01-016	HC20-13	13		36.5		US\$29.70
100-01-017	HC20-14	14		37		US\$29.70
100-01-018	HC20-15	15		37		US\$29.70
100-01-019	HC20-16	16		37.5		US\$27.00
100-01-020	HC32-6	6		32		25.5
100-01-021	HC32-8	8	27.5		US\$29.70	
100-01-022	HC32-10	10	30.5		US\$29.70	
100-01-023	HC32-12	12	30.5		US\$29.70	
100-01-024	HC32-14	14	32.5		US\$31.95	
100-01-025	HC32-16	16	40.5		US\$29.70	
100-01-026	HC32-18	18	40.5		US\$31.95	
100-01-027	HC32-20	20	40.5		US\$29.70	
100-01-028	HC32-25	25	48.5		US\$29.70	



HARLINGEN®

PRECISION HYDRAULIC EXPANSIONS CHUCK

- Used on CNC tool grinding machine for grinding/sharpening of drill, reamer, end mill etc.
- High precision and Radial Run-out not more than 2μ at 4d checking point.
- Super transmitted torque for high clamping reliability.
- For clamping cylindrical shank tolerance h6.
- Axial length adjustment available and max. adjustment travel 10mm.
- Can be operated frequently long time and keep good repeatability.



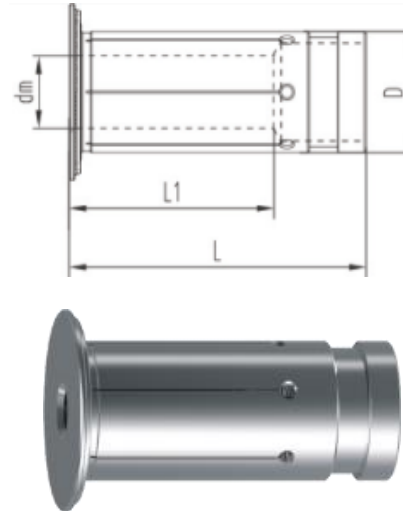
Order No.	Modle	Shank	Size(mm)							Wrench	for Collets	Unit Price
			dm	D1	D2	D3	L1	L2	L3			
132-01-001	JT50-HCM12-110M	SK50-AD	12	21.5	36.5	60	110	50	55	TS5	HC12..M	US\$295.73
132-01-002	JT50-HCM20-110M	SK50-AD	20	28	42	70	110	95	47	TS5	HC20..M	US\$264.00
132-01-003	JT50-HCM32-110M	SK50-AD	32	40	54	70	110	95	62.5	TS5	HC32..M	US\$293.33

PRECISION REDUCING SLEEVE FOR HYDRAULIC CHUCK

- Radial run-out less than 3 μ .
- Used for grinding/sharpening of drill, reamer, end mill etc.
- For clamping cutting tools with cylinderic shank tolerance h6

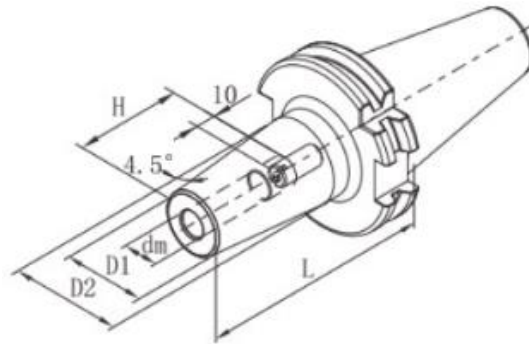
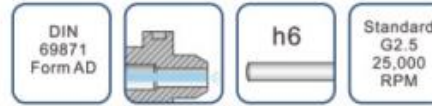


Order No.	Modle	Size (mm)				Unit Price
		dm	D	L1	L	
100-01-101	HC12-3M	3	12	16.5	47.5	US\$37.20
100-01-102	HC12-4M	4		16.5		US\$37.20
100-01-103	HC12-5M	5		16.5		US\$37.20
100-01-104	HC12-6M	6		24		US\$37.20
100-01-105	HC12-8M	8		25.5		US\$37.20
100-01-106	HC20-3M	3	20	17.5	52.5	US\$53.10
100-01-107	HC20-4M	4		17.5		US\$37.20
100-01-108	HC20-5M	5		17.5		US\$37.20
100-01-109	HC20-6M	6		25.5		US\$37.20
100-01-110	HC20-7M	7		28		US\$53.10
100-01-111	HC20-8M	8		28		US\$37.20
100-01-112	HC20-9M	9		32.5		US\$53.10
100-01-113	HC20-10M	10		32.5		US\$37.20
100-01-114	HC20-11M	11		36		US\$53.10
100-01-115	HC20-12M	12		36		US\$37.20
100-01-116	HC20-13M	13		36.5		US\$53.10
100-01-117	HC20-14M	14		37		US\$53.10
100-01-118	HC20-15M	15		37		US\$53.10
100-01-119	HC20-16M	16		37.5		US\$37.20
100-01-120	HC32-6M	6	32	25.5	63.5	US\$37.20
100-01-121	HC32-8M	8		27.5		US\$37.20
100-01-122	HC32-10M	10		30.5		US\$37.20
100-01-123	HC32-12M	12		30.5		US\$37.20
100-01-124	HC32-14M	14		32.5		US\$53.10
100-01-125	HC32-16M	16		40.5		US\$37.20
100-01-126	HC32-18M	18		40.5		US\$53.10
100-01-127	HC32-20M	20		40.5		US\$37.20
100-01-128	HC32-25M	25		48.5		US\$37.20



SHRINK FIT CHUCK

- Made of high-temperature steel and fit for High frequency heating machine.
- For clamping cutting tools with cylindric shank tolerance h6
- High tool-gripping strength and machining accuracy
- 360 degree concentric clamping without set screws, collets.
- Engineered to produce the high degree of balance available
- With indicating line for shank depth of cutter.



Order No.	Modle	Shank	Size(mm)					Screw	Unit Price
			dm	D1	D2	L	H		
132-02-401	JT40-SFX03-80	SK40-AD	3	10	-	80	10	-	US\$84.67
132-02-402	JT40-SFX04-80	SK40-AD	4	10	-	80	12	-	US\$81.67
132-02-403	JT40-SFX05-80	SK40-AD	5	10	-	80	15	-	US\$76.67
132-02-404	JT40-SFX06-80	SK40-AD	6	21	27	80	36	S005014C	US\$70.67
132-02-405	JT40-SFX06-120	SK40-AD	6	21	27	120	36	S005014C	US\$88.67
132-02-406	JT40-SFX06-160	SK40-AD	6	21	32	160	36	S005014C	US\$98.67
132-02-407	JT40-SF08-80	SK40-AD	8	21	27	80	36	S006014C	US\$58.67
132-02-408	JT40-SF08-120	SK40-AD	8	21	27	120	36	S006014C	US\$70.00
132-02-409	JT40-SF08-160	SK40-AD	8	21	32	160	36	S006014C	US\$80.00
132-02-410	JT40-SF10-80	SK40-AD	10	24	32	80	42	S008014C	US\$58.67
132-02-411	JT40-SF10-120	SK40-AD	10	24	32	120	42	S008014C	US\$70.00
132-02-412	JT40-SF10-160	SK40-AD	10	24	34	160	42	S008014C	US\$80.00
132-02-413	JT40-SF12-80	SK40-AD	12	24	32	80	47	S008014C	US\$58.67
132-02-414	JT40-SF12-120	SK40-AD	12	24	32	120	47	S008014C	US\$70.00
132-02-415	JT40-SF12-160	SK40-AD	12	24	34	160	47	S008014C	US\$80.00
132-02-416	JT40-SF14-80	SK40-AD	14	27	34	80	47	S008014C	US\$58.67

HARLINGEN®

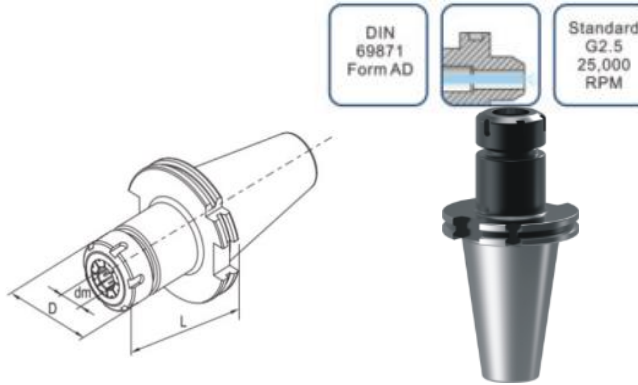
132-02-417	JT40-SF14-120	SK40-AD	14	27	34	120	47	S008014C	US\$70.00
132-02-418	JT40-SF14-160	SK40-AD	14	27	42	160	47	S008014C	US\$80.00
132-02-419	JT40-SF16-80	SK40-AD	16	27	34	80	50	S012014C	US\$58.67
132-02-420	JT40-SF16-120	SK40-AD	16	27	34	120	50	S012014C	US\$70.00
132-02-421	JT40-SF16-160	SK40-AD	16	27	42	160	50	S012014C	US\$80.00
132-02-422	JT40-SF18-80	SK40-AD	18	33	42	80	50	S012014C	US\$58.67
132-02-423	JT40-SF18-120	SK40-AD	18	33	42	120	50	S012014C	US\$70.00
132-02-424	JT40-SF18-160	SK40-AD	18	33	50	160	50	S012014C	US\$80.00
132-02-425	JT40-SF20-80	SK40-AD	20	33	42	80	52	S016016C	US\$58.67
132-02-426	JT40-SF20-120	SK40-AD	20	33	42	120	52	S016016C	US\$70.00
132-02-427	JT40-SF20-160	SK40-AD	20	33	50	160	52	S016016C	US\$80.00
132-02-428	JT40-SF25-100	SK40-AD	25	44	50	100	58	S016016C	US\$61.00
132-02-429	JT40-SF25-120	SK40-AD	25	44	50	120	58	S016016C	US\$72.67
132-02-430	JT40-SF25-160	SK40-AD	25	44	50	160	58	S016016C	US\$83.33
132-02-501	JT50-SFX06-80	SK50-AD	6	21	27	80	36	S005014C	US\$94.40
132-02-502	JT50-SFX06-120	SK50-AD	6	21	27	120	36	S005014C	US\$104.00
132-02-503	JT50-SFX06-160	SK50-AD	6	21	32	160	36	S005014C	US\$123.60
132-02-504	JT50-SF08-80	SK50-AD	8	21	27	80	36	S006014C	US\$78.80
132-02-505	JT50-SF08-120	SK50-AD	8	21	27	120	36	S006014C	US\$88.00
132-02-506	JT50-SF08-160	SK50-AD	8	21	32	160	36	S006014C	US\$107.60
132-02-507	JT50-SF10-80	SK50-AD	10	24	32	80	42	S008014C	US\$78.80
132-02-508	JT50-SF10-120	SK50-AD	10	24	32	120	42	S008014C	US\$88.00
132-02-509	JT50-SF10-160	SK50-AD	10	24	34	160	42	S008014C	US\$107.60
132-02-510	JT50-SF12-80	SK50-AD	12	24	32	80	47	S008014C	US\$78.80
132-02-511	JT50-SF12-120	SK50-AD	12	24	32	120	47	S008014C	US\$88.00
132-02-512	JT50-SF12-160	SK50-AD	12	24	34	160	47	S008014C	US\$107.60
132-02-513	JT50-SF14-80	SK50-AD	14	27	34	80	47	S008014C	US\$78.80
132-02-514	JT50-SF14-120	SK50-AD	14	27	34	120	47	S008014C	US\$88.00
132-02-515	JT50-SF14-160	SK50-AD	14	27	42	160	47	S008014C	US\$107.60
132-02-516	JT50-SF16-80	SK50-AD	16	27	34	80	50	S012014C	US\$78.80
132-02-517	JT50-SF16-120	SK50-AD	16	27	34	120	50	S012014C	US\$88.00
132-02-518	JT50-SF16-160	SK50-AD	16	27	42	160	50	S012014C	US\$107.60
132-02-519	JT50-SF18-80	SK50-AD	18	33	42	80	50	S012014C	US\$78.80
132-02-520	JT50-SF18-120	SK50-AD	18	33	42	120	50	S012014C	US\$88.00
132-02-521	JT50-SF18-160	SK50-AD	18	33	51	160	50	S012014C	US\$107.60
132-02-522	JT50-SF20-80	SK50-AD	20	33	42	80	52	S016016C	US\$78.80
132-02-523	JT50-SF20-120	SK50-AD	20	33	42	120	52	S016016C	US\$88.00
132-02-524	JT50-SF20-160	SK50-AD	20	33	51	160	52	S016016C	US\$107.60
132-02-525	JT50-SF25-100	SK50-AD	25	44	53	100	58	S016016C	US\$78.80

ADD: C-8F NO.6, HANGKONG ROAD, FENGDE INTERNATIONAL PLAZA, CHENGDU, SICHUAN, CHINA
 TEL: 028-86741971 86741739 FAX: 028-86756837 86750017
 E-MAIL: sales@sctools.com service@sctools.com

132-02-526	JT50-SF25-120	SK50-AD	25	44	53	120	58	S016016C	US\$88.00
132-02-527	JT50-SF25-160	SK50-AD	25	44	60	160	58	S016016C	US\$107.60
132-02-528	JT50-SF32-100	SK50-AD	32	44	53	100	58	S016016C	US\$78.80
132-02-529	JT50-SF32-120	SK50-AD	32	44	53	120	58	S016016C	US\$88.00
132-02-530	JT50-SF32-160	SK50-AD	32	44	60	160	58	S016016C	US\$107.60

ER COLLET CHUCK

- Radial run-out less than 0.01mm.
- Constructed of alloy steel for long, durable service life.
- For clamping tools with plain shank in collets to DIN6499.
- Supplied with high performance clamping nut.

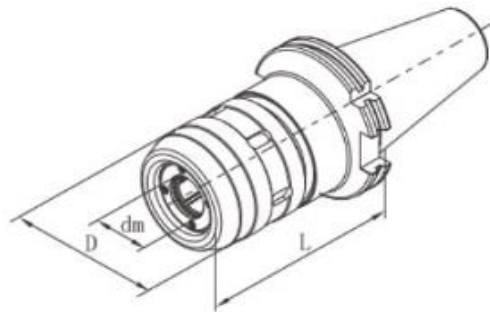


Order No.	Modle	Shank	Size(mm)			Nuts	Screw	For Collets	Wrench	Unit Price
			dm	D	L					
132-04-401	JT40-ER11-70	SK40-AD	0.5-7	19	70	CN11HS	SER11C	ER11	W17D	US\$34.67
132-04-402	JT40-ER11-120	SK40-AD	0.5-7	19	120					US\$41.33
132-04-403	JT40-ER16-70	SK40-AD	0.5-10	28	70	CN16HS	SER16C	ER16	W25D	US\$34.00
132-04-404	JT40-ER16-120	SK40-AD	0.5-10	28	120					US\$40.67
132-04-405	JT40-ER20-80	SK40-AD	1.0-13	34	80	CN20HS	SER20C	ER20	W30D	US\$34.00
132-04-406	JT40-ER20-120	SK40-AD	1.0-13	34	120					US\$40.67
132-04-407	JT40-ER25-80	SK40-AD	1.0-16	42	80	CN25B	SER25C	ER25	YER25B	US\$34.00
132-04-408	JT40-ER25-120	SK40-AD	1.0-16	42	120					US\$40.67
132-04-409	JT40-ER32-60	SK40-AD	2.0-20	50	60	CN32B	SER32C	ER32	YER32B	US\$34.00
132-04-410	JT40-ER32-120	SK40-AD	2.0-20	50	120					US\$40.67
132-04-411	JT40-ER40-80	SK40-AD	3.0-26	63	80	CN40B	SER40C	ER40	YER40B	US\$35.33
132-04-501	JT50-ER16-60	SK50-AD	0.5-10	28	60	CN16HS	SER16C	ER16	W25D	US\$48.80
132-04-502	JT50-ER16-120	SK50-AD	0.5-10	28	120					US\$54.40
132-04-503	JT50-ER20-70	SK50-AD	1.0-13	34	70	CN20HS	SER20C	ER20	W30D	US\$48.80
132-04-504	JT50-ER20-120	SK50-AD	1.0-13	34	120					US\$54.40
132-04-505	JT50-ER25-70	SK50-AD	1.0-16	42	70	CN25B	SER25C	ER25	YER25B	US\$48.80
132-04-506	JT50-ER25-120	SK50-AD	1.0-16	42	120					US\$54.40

132-04-507	JT50-ER32-90	SK50-AD	2.0-20	50	90	CN32B	SER32C	ER32	YER32B	US\$48.80
132-04-508	JT50-ER32-120	SK50-AD	2.0-20	50	120					US\$54.40
132-04-509	JT50-ER40-100	SK50-AD	3.0-26	50	100	CN40B	SER40C	ER40	YER40B	US\$52.00

POWER MILLING CHUCK

- Very high clamping force and High stability improving surface quality and tool life
- Optimised design resulting in Ideal damping characteristics and low vibration.
- Radial run-out less than 0.01mm.
- For clamping cutting tools with cylinderic shank tolerance h6
- Flexible clamping range by using reducing sleeve for various tool shank.

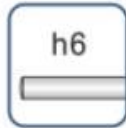


Order No.	Modle	Shank	Size(mm)			For Collets	Wrench	Unit Price
			dm	D	L			
132-03-401	JT40-C20-95	SK40-AD	20	55	95	C20	WC20	US\$76.67
132-03-402	JT40-C25-100	SK40-AD	25	62	100	C25	WC25	US\$76.67
132-03-403	JT40-C32-105	SK40-AD	32	72	105	C32	WC32	US\$76.67
132-03-501	JT50-C20-105	SK50-AD	20	55	105	C20	WC20	US\$104.00
132-03-502	JT50-C25-110	SK50-AD	25	62	110	C25	WC25	US\$104.00
132-03-503	JT50-C32-110	SK50-AD	32	72	110	C32	WC32	US\$104.00
132-03-504	JT50-C42-110	SK50-AD	42	87	110	C42	WC42	US\$144.00

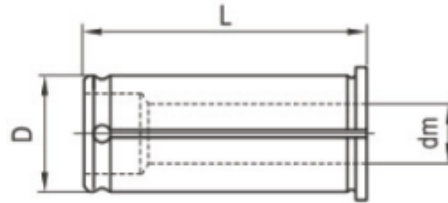
HARLINGEN®

REDUCING SLEEVE FOR POWER MILLING CHUCK

- For drill, milling, reaming.
- Radial run-out less than 0.01mm
- For clamping cutting tools with cylindrical shank tolerance h6



Order No.	Modle	Size (mm)			Unit Price
		dm	D	L	
100-03-001	C20-3	3	20	55	US\$6.57
100-03-002	C20-4	4			US\$6.57
100-03-003	C20-5	5			US\$6.57
100-03-004	C20-6	6			US\$6.57
100-03-005	C20-8	8			US\$6.57
100-03-006	C20-10	10			US\$6.57
100-03-007	C20-12	12			US\$6.57
100-03-008	C20-14	14			US\$6.57
100-03-009	C20-16	16			US\$6.57
100-03-010	C25-4	4			25
100-03-011	C25-5	5	US\$6.57		
100-03-012	C25-6	6	US\$6.57		
100-03-013	C25-8	8	US\$6.57		
100-03-014	C25-10	10	US\$6.57		
100-03-015	C25-12	12	US\$6.57		
100-03-016	C25-14	14	US\$6.57		
100-03-017	C25-16	16	US\$6.57		
100-03-018	C25-18	18	US\$6.57		
100-03-019	C25-20	20	US\$6.57		



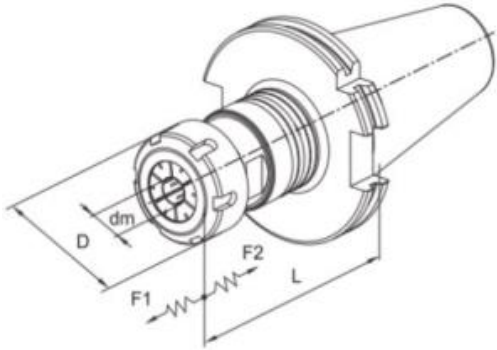
HARLINGEN®

100-03-020	C32-6	6	32	65	US\$6.90
100-03-021	C32-8	8			US\$6.90
100-03-022	C32-10	10			US\$6.90
100-03-023	C32-12	12			US\$6.90
100-03-024	C32-14	14			US\$6.90
100-03-025	C32-16	16			US\$6.90
100-03-026	C32-18	18			US\$6.90
100-03-027	C32-20	20			US\$6.90
100-03-028	C32-25	25			US\$6.90
100-03-029	C42-6	6			42
100-03-030	C42-8	8	US\$15.75		
100-03-031	C42-10	10	US\$15.75		
100-03-032	C42-12	12	US\$15.75		
100-03-033	C42-14	14	US\$15.75		
100-03-034	C42-16	16	US\$15.75		
100-03-035	C42-18	18	US\$15.75		
100-03-036	C42-20	20	US\$15.75		
100-03-037	C42-25	25	US\$15.75		
100-03-038	C42-32	32	US\$15.75		

HARLINGEN®

AUTOMATIC MICRO-COMPENSATION TAPPING CHUCK

- Compensation capacity $\pm 0.5\text{mm}$.
- Precision producing true thread with quality surface.
- Improving effectiveness and tap life time.
- For NC machines and machining center.
- For right hand and left hand thread.

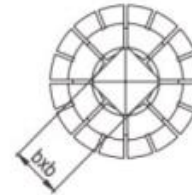
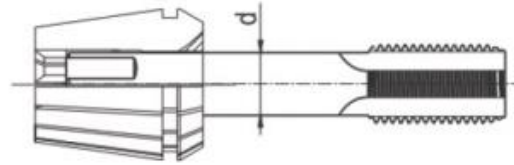


Order No.	Model	SHANK	capacity	Size(mm)					Nuts	for Collets	Unit Price
				D	dm	L	F1	F2			
132-13-401	JT40-V20-80	SK40-AD	M4-M12	34	3-10	80	0.5	0.5	CN20HS	ER20	US\$62.00
132-13-501	JT50-V20-80	SK50-AD	(No.8-7/16)	34	3-10	80	0.5	0.5	CN20HS	ER20	US\$76.67
132-13-402	JT40-V32-95	SK40-AD	M4-M20	50	3-16	95	0.5	0.5	CN32B	ER32	US\$62.00
132-13-502	JT50-V32-95	SK50-AD	(No.8-3/4)	50	3-16	95	0.5	0.5	CN32B	ER32	US\$76.67

HARLINGEN®

ER TAP COLLET

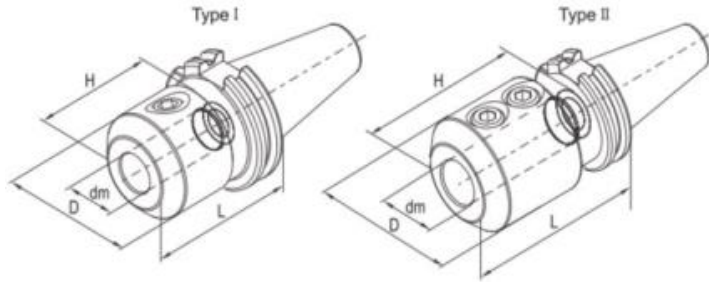
• Special design with internal square drive for machine taps.



Order No.	Modle	For taps					Unit Price
		Shank d(mm)	Square b(mm)	ISO529/IS O2283	DIN374/DI N376	JISB4430	
100-13-201	ER20-6.3B5	6.3	5	M8	M8	M6/M8	US\$5.10
100-13-202	ER20-7B5.5	7	5.5	-	M10	M10	US\$5.10
100-13-203	ER20-8B6.3	8	6.3	M10	-	-	US\$5.10
100-13-204	ER20-8.5B6.5	8.5	6.5	-	-	M12	US\$5.10
100-13-205	ER20-9B7.1	9	7.1	M12	M12	-	US\$5.10
100-13-301	ER32-6.3B5	6.3	5	M8	M8	M6/M8	US\$5.43
100-13-302	ER32-7B5.5	7	5.5	-	M10	M10	US\$5.43
100-13-303	ER32-8B6.3	8	6.3	M10	-	-	US\$5.43
100-13-304	ER32-8.5B6.5	8.5	6.5	-	-	M12	US\$5.43
100-13-305	ER32-9B7.1	9	7.1	M12	M12	-	US\$5.43
100-13-306	ER32-12B9	12	9	-	M16	-	US\$5.43
100-13-307	ER32-12.5B10	12.5	10	M16	-	M16	US\$5.43
100-13-308	ER32-14B11.2	14	11.2	M18/M20	M18	M18	US\$5.43
100-13-309	ER32-15B12	15	12	-	-	M20	US\$5.43
100-13-310	ER32-16B12	16	12	-	M20	-	US\$5.43

SIDE LOCK HOLDER

• For clamping tools with weldon shank to DIN1835 form B and DIN6535 form HB.

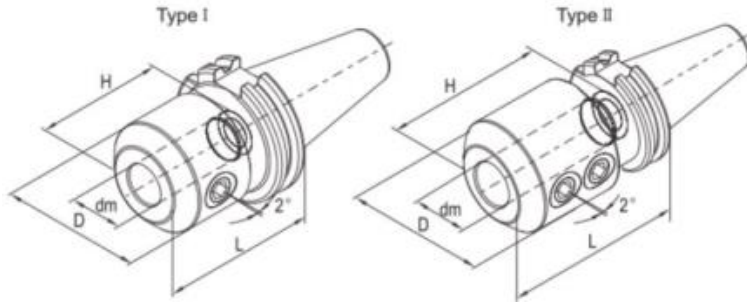


Order No.	Model	Shank	Size(mm)				Screw	Type	Unit Price
			dm	D	L	H			
132-05-401	JT40-XP16-63	SK40-AD	16	48	63	52	SXP16	I	US\$27.87
132-05-402	JT40-XP20-70	SK40-AD	20	50	70	54	SXP20	I	US\$27.87
132-05-403	JT40-XP25-100	SK40-AD	25	60	100	66	SXP25	II	US\$29.07
132-05-404	JT40-XP32-100	SK40-AD	32	68	100	70	SXP32	II	US\$29.07
132-05-501	JT50-XP16-63	SK50-AD	16	48	63	52	SXP16	I	US\$43.60
132-05-502	JT50-XP20-63	SK50-AD	20	50	63	54	SXP20	I	US\$43.60
132-05-503	JT50-XP25-80	SK50-AD	25	60	80	66	SXP25	II	US\$46.24
132-05-504	JT50-XP32-100	SK50-AD	32	68	100	70	SXP32	II	US\$46.24
132-05-505	JT50-XP40-110	SK50-AD	40	84	110	80	SXP32	II	US\$46.24

HARLINGEN®

2° SIDE LOCK HOLDER

- For clamping tools with parallel shank and inclined clamping flat(2°)
DIN1835 form E and DIN6535 form HE.

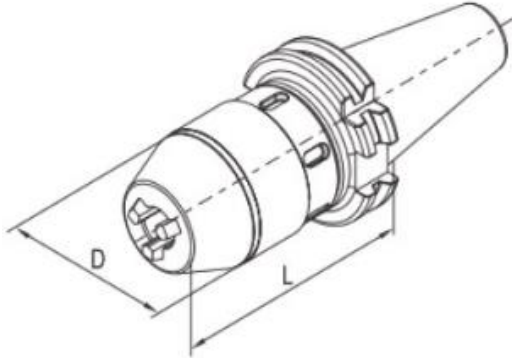


Order No.	Modle	Shank	Size(mm)				Screw	Screw	Type	Unit Price
			dm	D	L	H				
132-05-405	JT40-XPDP16-63	SK40-AD	16	48	63	52	SXP16	S012014C	I	US\$32.00
132-05-406	JT40-XPDP20-70	SK40-AD	20	52	70	54	SXP20	S016016C	I	US\$32.00
132-05-407	JT40-XPDP25-100	SK40-AD	25	65	100	59	SXP25	S020016C	II	US\$33.33
132-05-408	JT40-XPDP32-100	SK40-AD	32	72	100	63	SXP32	S020016C	II	US\$33.33
132-05-506	JT50-XPDP16-63	SK50-AD	16	48	63	52	SXP16	S012014C	I	US\$50.40
132-05-507	JT50-XPDP20-63	SK50-AD	20	52	63	54	SXP20	S016016C	I	US\$50.40
132-05-508	JT50-XPDP25-80	SK50-AD	25	65	80	59	SXP25	S020016C	II	US\$53.20
132-05-509	JT50-XPDP32-100	SK50-AD	32	72	100	63	SXP32	S020016C	II	US\$53.20

HARLINGEN®

INTEGRAL DRILL CHUCK HOLDER

- Radial run-out less than 0.05mm.
- Wrench-Lock chucks incorporate wrench groove for additional tightening force.
- Integral shank design provides for greater accuracy and safety.
- Wrench included.

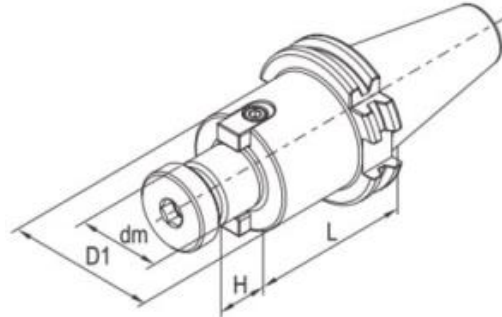


DIN
69871
Form A

Order No.	Modle	Shank	Capacity (mm)	Size(mm)		Wrench	Unit Price
				D	L		
132-12-401	JT40-KPU08-80	SK40-A	0.5-8	37.5	80	WCN20	US\$68.00
132-12-402	JT40-KPU13-90	SK40-A	1.0-13	50.5	90	WCN32	US\$68.00
132-12-403	JT40-KPU16-105	SK40-A	3-16	57	105	WCN32	US\$70.67
132-12-501	JT50-KPU08-80	SK50-A	0.5-8	37.5	80	WCN20	US\$92.00
132-12-502	JT50-KPU13-100	SK50-A	1.0-13	50.5	100	WCN32	US\$92.00
132-12-503	JT50-KPU16-105	SK50-A	3-16	57	105	WCN32	US\$96.00

SHELL END MILL ARBOR

• For clamping shell end mill and milling cutter.



Order No.	Modle	Shank	Size(mm)				Screw	Key	Screw	Unit Price
			dm	D1	L	H				
131-07-401	JT40-XMB16-60	SK40-A	16	34	60	17	MS08030	JC08017	MS03008	US\$29.33
131-07-402	JT40-XMB16-120	SK40-A	16	34	120	17	MS08030	JC08017	MS03008	US\$32.27
131-07-403	JT40-XMB22-60	SK40-A	22	42	60	19	MS10030	JC10021	MS04010	US\$29.33
131-07-404	JT40-XMB22-120	SK40-A	22	42	120	19	MS10030	JC10021	MS04010	US\$32.27
131-07-405	JT40-XMB27-60	SK40-A	27	60	60	21	SXM27	JC12023	MS05016	US\$29.33
131-07-406	JT40-XMB27-120	SK40-A	27	60	120	21	SXM27	JC12023	MS05016	US\$32.27
131-07-407	JT40-XMB32-60	SK40-A	32	78	60	24	SXM32	JC14020	MS06020	US\$33.00
131-07-408	JT40-XMB40-60	SK40-A	40	89	60	27	SXM40	KXM40	MS08020	US\$33.67
131-07-501	JT50-XMB16-60	SK50-A	16	34	60	17	MS08030	JC08017	MS03008	US\$46.64
131-07-502	JT50-XMB16-120	SK50-A	16	34	120	17	MS08030	JC08017	MS03008	US\$49.28
131-07-503	JT50-XMB22-60	SK50-A	22	42	60	19	MS10030	JC10021	MS04010	US\$46.64
131-07-504	JT50-XMB22-120	SK50-A	22	42	120	19	MS10030	JC10021	MS04010	US\$49.28
131-07-505	JT50-XMB27-60	SK50-A	27	60	60	21	SXM27	JC12023	MS05016	US\$46.64
131-07-506	JT50-XMB27-90	SK50-A	27	60	90	21	SXM27	JC12023	MS05016	US\$48.00
131-07-507	JT50-XMB27-120	SK50-A	27	60	120	21	SXM27	JC12023	MS05016	US\$49.28
131-07-508	JT50-XMB32-75	SK50-A	32	78	75	24	SXM32	JC14020	MS06020	US\$50.16
131-07-509	JT50-XMB40-75	SK50-A	40	89	75	27	SXM40	KXM40	MS08020	US\$51.04

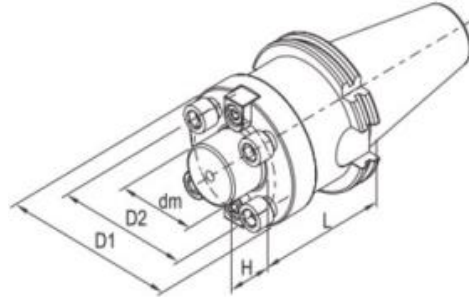
HARLINGEN®

FACE MILLING CUTTER HOLDER

- For clamping face milling cutter with 4 holes .
- Increased collar contact surface.
- Suppled with lock screws.

DIN 69871 Form A

Standard G6.3 8.000 RPM

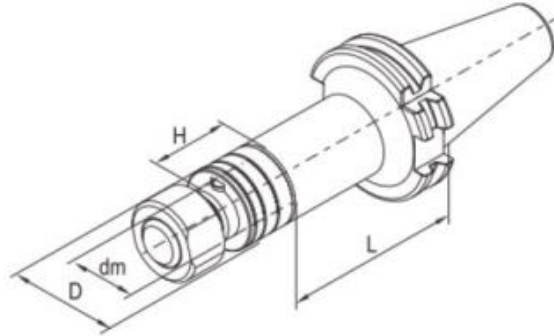


Order No.	Modle	Shank	Size(mm)					Screw (4pcs)	Key	Screw	Unit Price
			dm	D1	D2	L	H				
131-09-401	JT40-XMC40-60	SK40-A	40	89	66.7	60	27	MS12045	KXM40	MS08020	US\$33.73
131-09-501	JT50-XMC40-75	SK50-A	40	89	66.7	75	27	MS12045	KXM40	MS08020	US\$51.04
131-09-502	JT50-XMC60-75	SK50-A	60	129	101.6	75	38	MS16045	KXMC60	MS10025	US\$65.60

HARLINGEN®

SLOTING CUTTER HOLDER

- For clamping saws and side milling cutter.
- Furnished complete with assorted spacers, nut and key.



DIN
69871
Form A

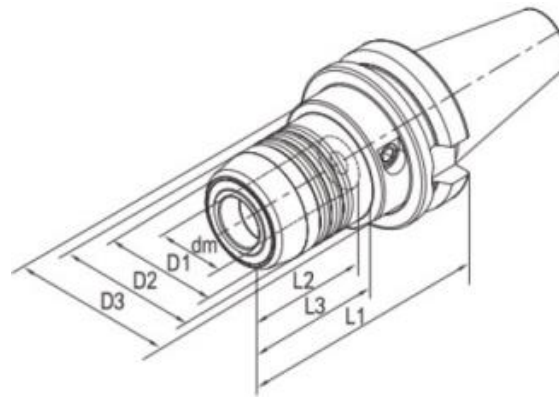
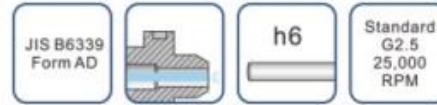
Standard
G6.3
8,000
RPM

Order No.	Modle	Shank	Size(mm)				Nuts	Spacer	Key	Unit Price
			dm	D	L	H				
131-10-401	JT40-XS22-75	SK40-A	22	34	75	30	MXS22	SD22	JA06020	US\$29.00
131-10-402	JT40-XS22-120	SK40-A	22	34	120	30	MXS22	SD22	JA06020	US\$31.20
131-10-403	JT40-XS27-75	SK40-A	27	40	75	30	MXS27	SD27	JA07022	US\$29.73
131-10-404	JT40-XS27-120	SK40-A	27	40	120	30	MXS27	SD27	JA07022	US\$31.20
131-10-405	JT40-XS32-90	SK40-A	32	46	90	30	MXS32	SD32	JA08022	US\$31.53
131-10-501	JT50-XS22-90	SK50-A	22	34	90	30	MXS22	SD22	JA06020	US\$45.76
131-10-502	JT50-XS27-90	SK50-A	27	40	90	30	MXS27	SD27	JA07022	US\$46.64
131-10-503	JT50-XS27-135	SK50-A	27	40	135	30	MXS27	SD27	JA07022	US\$50.64
131-10-504	JT50-XS32-90	SK50-A	32	46	90	30	MXS32	SD32	JA08022	US\$47.52
131-10-505	JT50-XS32-135	SK50-A	32	46	135	30	MXS32	SD32	JA08022	US\$51.52
131-10-506	JT50-XS40-90	SK50-A	40	55	90	30	MXS40	SD40	JA10025	US\$48.40
131-10-507	JT50-XS40-135	SK50-A	40	55	135	30	MXS40	SD40	JA10025	US\$52.40
131-10-508	JT50-XS50-90	SK50-A	50	69	90	30	MXS50	SD50	JA12025	US\$54.40

HARLINGEN®

HYDRAULIC EXPANSIONS CHUCK

- Super transmitted torque for high clamping reliability.
- Radial run-out less than 3μ (system accuracy at 4xd)
- For clamping cutting tools with cylindric shank tolerance h6
- Flexible clamping range due to use of reducing sleeve for Various shank.
- Axial length adjustment available and max. adjustment travel 10mm.
- Ideal damping characteristics, resulting in optimum surface finish, increase cutter life time and spindle protection.



Order No.	Modle	Shank	Size(mm)							Screw	Screw wrench	for Collets	Unit Price
			dm	D1	D2	D3	L1	L2	L3				
122-01-301	BT30-HCM06-50.8	BT30-AD	6	23	26	46	50.8	37	18	HCS005014C	TS5	-	US\$158.40
122-01-302	BT30-HCM08-50.8	BT30-AD	8	25	28	46	50.8	37	18.5	HCS006014C	TS5	-	US\$158.40
122-01-303	BT30-HCM10-50.8	BT30-AD	10	27	30	46	50.8	41	19	HCS008014C	TS5	-	US\$158.40
122-01-304	BT30-HCM12-50.8	BT30-AD	12	29	32	46	50.8	46	19.5	HCS008014C	TS5	HC12	US\$128.00
122-01-305	BT30-HCM16-90	BT30-AD	16	35	38	45	90	49	50	HCS008014C	TS5	-	US\$128.00
122-01-306	BT30-HCM20-90	BT30-AD	20	37.5	42	45	90	51	50	HCS008014C	TS5	HC20	US\$108.00
122-01-401	BT40-HCM06-90	BT40-AD	6	22	26	50	90	37	43	HCS005014C	TS5	-	US\$158.40
122-01-402	BT40-HCM08-90	BT40-AD	8	24	28	50	90	37	44.5	HCS006014C	TS5	-	US\$158.40
122-01-403	BT40-HCM10-90	BT40-AD	10	26	30	50	90	41	44.5	HCS008014C	TS5	-	US\$158.40
122-01-404	BT40-HCM12-90	BT40-AD	12	28	32	50	90	46	44.5	HCS008014C	TS5	HC12	US\$128.00
122-01-405	BT40-HCM16-90	BT40-AD	16	34	38	50	90	49	47.5	HCS008014C	TS5	-	US\$128.00
122-01-406	BT40-HCM20-90	BT40-AD	20	38	42	50	90	51	47.5	HCS008014C	TS5	HC20	US\$97.15
122-01-407	BT40-HCM25-83	BT40-AD	25	53	57	72	83	57	25.5	HCS012014C	TS6		US\$160.00
122-01-408	BT40-HCM32-83	BT40-AD	32	60	63	80	83	61	25.5	HCS012014C	TS6	HC32	US\$144.00
122-01-409	BT40-HCM14-90	BT40-AD	14	30	34	50	90	46	44.5	HCS008014C	TS5	-	US\$128.00

HARLINGEN®

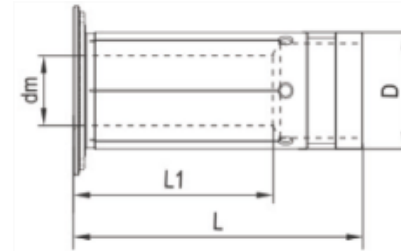
122-01-410	BT40-HCM18-90	BT40-AD	18	36	40	50	90	49	47.5	HCSO08014C	TS5	-	US\$128.00
122-01-411	BT40-HCM06-150	BT40-AD	6	22	26	50	150	37	103	HCSO05014C	TS5	-	US\$271.73
122-01-412	BT40-HCM08-150	BT40-AD	8	24	28	50	150	37	104	HCSO06014C	TS5	-	US\$271.73
122-01-413	BT40-HCM10-150	BT40-AD	10	26	30	50	150	41	104	HCSO08014C	TS5	-	US\$271.73
122-01-414	BT40-HCM12-150	BT40-AD	12	28	32	50	150	46	105	HCSO08014C	TS5	HC12	US\$228.00
122-01-415	BT40-HCM14-150	BT40-AD	14	30	34	50	150	46	105	HCSO08014C	TS5	-	US\$228.00
122-01-416	BT40-HCM16-150	BT40-AD	16	34	38	50	150	49	106	HCSO08014C	TS5	-	US\$228.00
122-01-417	BT40-HCM18-150	BT40-AD	18	36	40	50	150	49	107	HCSO08014C	TS5	-	US\$228.00
122-01-418	BT40-HCM20-150	BT40-AD	20	38	42	50	150	51	107	HCSO08014C	TS5	HC20	US\$208.00
122-01-419	BT40-HCM06-200	BT40-AD	6	22	26	50	200	37	153	HCSO05014C	TS5	-	US\$311.73
122-01-420	BT40-HCM08-200	BT40-AD	8	24	28	50	200	37	154	HCSO06014C	TS5	-	US\$311.73
122-01-421	BT40-HCM10-200	BT40-AD	10	26	30	50	200	41	154	HCSO08014C	TS5	-	US\$311.73
122-01-422	BT40-HCM12-200	BT40-AD	12	28	32	50	200	46	155	HCSO08014C	TS5	HC12	US\$254.67
122-01-423	BT40-HCM14-200	BT40-AD	14	30	34	50	200	46	155	HCSO08014C	TS5	-	US\$254.67
122-01-424	BT40-HCM16-200	BT40-AD	16	34	38	50	200	49	156	HCSO08014C	TS5	-	US\$254.67
122-01-425	BT40-HCM18-200	BT40-AD	18	36	40	50	200	49	157	HCSO08014C	TS5	-	US\$254.67
122-01-426	BT40-HCM20-200	BT40-AD	20	38	42	50	200	51	157	HCSO08014C	TS5	HC20	US\$234.67
122-01-501	BT50-HCM06-90	BT50-AD	6	22	26	44.5	90	37	29.5	HCSO05014C	TS5	-	US\$258.00
122-01-502	BT50-HCM08-90	BT50-AD	8	24	28	44.5	90	37	30	HCSO06014C	TS5	-	US\$258.00
122-01-503	BT50-HCM10-90	BT50-AD	10	26	30	44.5	90	41	31	HCSO08014C	TS5	-	US\$258.00
122-01-504	BT50-HCM12-90	BT50-AD	12	28	32	44.5	90	46	34	HCSO08014C	TS5	HC12	US\$166.40
122-01-505	BT50-HCM16-90	BT50-AD	16	34	38	44.5	90	49	34	HCSO08014C	TS5	-	US\$216.67
122-01-506	BT50-HCM20-90	BT50-AD	20	38	42	44.5	90	51	34	HCSO08014C	TS5	HC20	US\$140.00
122-01-507	BT50-HCM25-90	BT50-AD	25	53	57	66	90	57	34	HCS012014C	TS6	-	US\$216.67
122-01-508	BT50-HCM32-90	BT50-AD	32	60	64	72	90	61	34	HCS012014C	TS6	HC32	US\$187.20
122-01-509	BT50-HCM12-150	BT50-AD	12	28	32	50	150	46	95	HCSO08014C	TS5	HC12	US\$273.07
122-01-510	BT50-HCM20-150	BT50-AD	20	38	42	50	150	51	95	HCSO08014C	TS5	HC20	US\$246.67

REDUCING SLEEVE FOR HYDRAULIC EXPANSIONS CHUCK

- Radial run-out less than 5 μ .
- For clamping cutting tools with cylinderic shank tolerance h6.

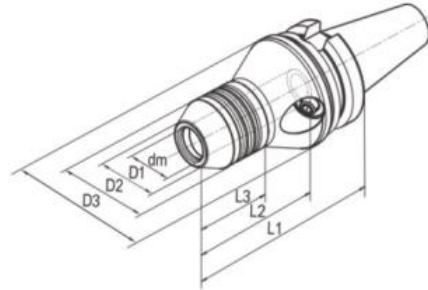
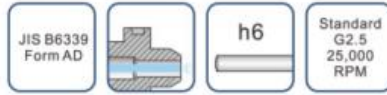


Order No.	Modle	Size (mm)				Unit Price
		dm	D	L1	L	
100-01-001	HC12-3	3	12	16.5	47.5	US\$29.70
100-01-002	HC12-4	4		16.5		US\$29.70
100-01-003	HC12-5	5		16.5		US\$29.70
100-01-004	HC12-6	6		24		US\$29.70
100-01-005	HC12-8	8		25.5		US\$29.70
100-01-006	HC20-3	3	20	17.5	52.5	US\$29.70
100-01-007	HC20-4	4		17.5		US\$27.00
100-01-008	HC20-5	5		17.5		US\$27.00
100-01-009	HC20-6	6		25.5		US\$27.00
100-01-010	HC20-7	7		28		US\$29.70
100-01-011	HC20-8	8		28		US\$27.00
100-01-012	HC20-9	9		32.5		US\$29.70
100-01-013	HC20-10	10		32.5		US\$27.00
100-01-014	HC20-11	11		36		US\$29.70
100-01-015	HC20-12	12		36		US\$27.00
100-01-016	HC20-13	13	36.5	US\$29.70		
100-01-017	HC20-14	14	37	US\$29.70		
100-01-018	HC20-15	15	37	US\$29.70		
100-01-019	HC20-16	16	37.5	US\$27.00		
100-01-020	HC32-6	6	32	25.5	63.5	US\$29.70
100-01-021	HC32-8	8		27.5		US\$29.70
100-01-022	HC32-10	10		30.5		US\$29.70
100-01-023	HC32-12	12		30.5		US\$29.70
100-01-024	HC32-14	14		32.5		US\$31.95
100-01-025	HC32-16	16		40.5		US\$29.70
100-01-026	HC32-18	18		40.5		US\$31.95
100-01-027	HC32-20	20		40.5		US\$29.70
100-01-028	HC32-25	25		48.5		US\$29.70



PRECISION HYDRAULIC EXPANSIONS CHUCK

- Used on CNC tool grinding machine for grinding/sharpening of drill, reamer, end mill etc.
- High precision and Radial Run-out not more than 2μ at 4d checking point.
- Super transmitted torque for high clamping reliability.
- For clamping cylinderic shank tolerance h6
- Can be operated frequently long time and keep good repeatability.



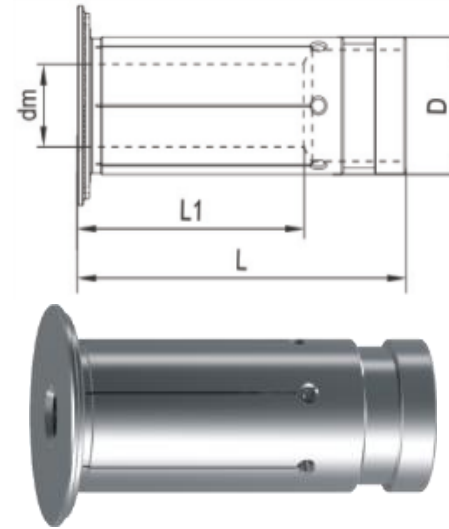
Order No.	Modle	Shank	Size(mm)							Wrench	for Collets	Unit Price
			dm	D1	D2	D3	L1	L2	L3			
122-01-001	BT40-HCM12-110M	BT40-AD	12	21.5	36.5	60	110	80	47	TS5	HC12..M	US\$316.67
122-01-002	BT40-HCM20-110M	BT40-AD	20	28	42	67	110	85	47	TS5	HC20..M	US\$316.67

PRECISION REDUCING SLEEVE FOR HYDRAULIC CHUCK

- Radial run-out less than 3 μ .
- Used for grinding/sharpening of drill, reamer, end mill etc.
- For clamping cutting tools with cylinderic shank tolerance h6

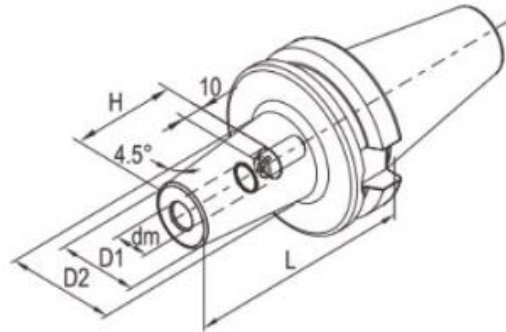
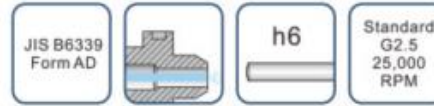


Order No.	Modle	Size (mm)				Unit Price
		dm	D	L1	L	
100-01-101	HC12-3M	3	12	16.5	47.5	US\$37.20
100-01-102	HC12-4M	4		16.5		US\$37.20
100-01-103	HC12-5M	5		16.5		US\$37.20
100-01-104	HC12-6M	6		24		US\$37.20
100-01-105	HC12-8M	8		25.5		US\$37.20
100-01-106	HC20-3M	3	20	17.5	52.5	US\$53.10
100-01-107	HC20-4M	4		17.5		US\$37.20
100-01-108	HC20-5M	5		17.5		US\$37.20
100-01-109	HC20-6M	6		25.5		US\$37.20
100-01-110	HC20-7M	7		28		US\$53.10
100-01-111	HC20-8M	8		28		US\$37.20
100-01-112	HC20-9M	9		32.5		US\$53.10
100-01-113	HC20-10M	10		32.5		US\$37.20
100-01-114	HC20-11M	11		36		US\$53.10
100-01-115	HC20-12M	12		36		US\$37.20
100-01-116	HC20-13M	13		36.5		US\$53.10
100-01-117	HC20-14M	14		37		US\$53.10
100-01-118	HC20-15M	15		37		US\$53.10
100-01-119	HC20-16M	16		37.5		US\$37.20
100-01-120	HC32-6M	6		32		25.5
100-01-121	HC32-8M	8	27.5		US\$37.20	
100-01-122	HC32-10M	10	30.5		US\$37.20	
100-01-123	HC32-12M	12	30.5		US\$37.20	
100-01-124	HC32-14M	14	32.5		US\$53.10	
100-01-125	HC32-16M	16	40.5		US\$37.20	
100-01-126	HC32-18M	18	40.5		US\$53.10	
100-01-127	HC32-20M	20	40.5		US\$37.20	
100-01-128	HC32-25M	25	48.5		US\$37.20	



SHRINK FIT CHUCK

- Made of high-temperature steel and fit for High frequency heating machine.
- For clamping cutting tools with cylinderic shank tolerance h6
- High tool-gripping strength and machining accuracy
- 360 degree concentric clamping without set screws, collets.
- Engineered to produce the high degree of balance available
- With indicating line for shank depth of cutter.



Order No.	Modle	Shank	Size(mm)					Screw	Unit Price
			dm	D1	D2	L	H		
122-02-301	BT30-SFX03-60	BT30-AD	3	10	-	60	10	-	US\$84.67
122-02-302	BT30-SFX04-60	BT30-AD	4	10	-	60	12	-	US\$81.67
122-02-303	BT30-SFX05-60	BT30-AD	5	10	-	60	15	-	US\$76.67
122-02-304	BT30-SFX06-80	BT30-AD	6	21	27	80	36	S005014C	US\$70.67
122-02-305	BT30-SFX06-105	BT30-AD	6	21	27	105	36	S005014C	US\$83.00
122-02-306	BT30-SFX06-120	BT30-AD	6	21	27	120	36	S005014C	US\$88.67
122-02-307	BT30-SF08-80	BT30-AD	8	21	27	80	36	S006014C	US\$58.67
122-02-308	BT30-SF08-105	BT30-AD	8	21	27	105	36	S006014C	US\$64.33
122-02-309	BT30-SF08-120	BT30-AD	8	21	32	120	36	S006014C	US\$70.00
122-02-310	BT30-SF10-80	BT30-AD	10	24	32	80	42	S008014C	US\$58.67
122-02-311	BT30-SF10-105	BT30-AD	10	24	32	105	42	S008014C	US\$64.33
122-02-312	BT30-SF10-120	BT30-AD	10	24	32	120	42	S008014C	US\$70.00
122-02-313	BT30-SF12-80	BT30-AD	12	24	32	80	47	S008014C	US\$58.67
122-02-314	BT30-SF12-105	BT30-AD	12	24	32	105	47	S008014C	US\$64.33
122-02-315	BT30-SF12-120	BT30-AD	12	24	34	120	47	S008014C	US\$70.00
122-02-316	BT30-SF14-80	BT30-AD	14	27	34	80	47	S008014C	US\$58.67
122-02-317	BT30-SF14-105	BT30-AD	14	27	34	105	47	S008014C	US\$64.33
122-02-318	BT30-SF14-120	BT30-AD	14	27	34	120	47	S008014C	US\$70.00

HARLINGEN®

122-02-319	BT30-SF16-80	BT30-AD	16	27	34	80	50	S012014C	US\$58.67
122-02-320	BT30-SF16-105	BT30-AD	16	27	34	105	50	S012014C	US\$64.33
122-02-321	BT30-SF16-120	BT30-AD	16	27	34	120	50	S012014C	US\$70.00
122-02-401	BT40-SFX03-80	BT40-AD	3	10	-	80	10	-	US\$84.67
122-02-402	BT40-SFX04-80	BT40-AD	4	10	-	80	12	-	US\$81.67
122-02-403	BT40-SFX05-80	BT40-AD	5	10	-	80	15	-	US\$76.67
122-02-404	BT40-SFX06-90	BT40-AD	6	21	27	90	36	S005014C	US\$70.67
122-02-405	BT40-SFX06-120	BT40-AD	6	21	27	120	36	S005014C	US\$88.67
122-02-406	BT40-SFX06-160	BT40-AD	6	21	32	160	36	S005014C	US\$98.67
122-02-407	BT40-SF08-90	BT40-AD	8	21	27	90	36	S006014C	US\$58.67
122-02-408	BT40-SF08-120	BT40-AD	8	21	27	120	36	S006014C	US\$70.00
122-02-409	BT40-SF08-160	BT40-AD	8	21	32	160	36	S006014C	US\$80.00
122-02-410	BT40-SF10-90	BT40-AD	10	24	32	90	42	S008014C	US\$58.67
122-02-411	BT40-SF10-120	BT40-AD	10	24	32	120	42	S008014C	US\$70.00
122-02-412	BT40-SF10-160	BT40-AD	10	24	34	160	42	S008014C	US\$80.00
122-02-413	BT40-SF12-90	BT40-AD	12	24	32	90	47	S008014C	US\$58.67
122-02-414	BT40-SF12-120	BT40-AD	12	24	32	120	47	S008014C	US\$70.00
122-02-415	BT40-SF12-160	BT40-AD	12	24	34	160	47	S008014C	US\$80.00
122-02-416	BT40-SF14-90	BT40-AD	14	27	34	90	47	S008014C	US\$58.67
122-02-417	BT40-SF14-120	BT40-AD	14	27	34	120	47	S008014C	US\$70.00
122-02-418	BT40-SF14-160	BT40-AD	14	27	42	160	47	S008014C	US\$80.00
122-02-419	BT40-SF16-90	BT40-AD	16	27	34	90	50	S012014C	US\$58.67
122-02-420	BT40-SF16-120	BT40-AD	16	27	34	120	50	S012014C	US\$70.00
122-02-421	BT40-SF16-160	BT40-AD	16	27	42	160	50	S012014C	US\$80.00
122-02-422	BT40-SF18-90	BT40-AD	18	33	42	90	50	S012014C	US\$58.67
122-02-423	BT40-SF18-120	BT40-AD	18	33	42	120	50	S012014C	US\$70.00
122-02-424	BT40-SF18-160	BT40-AD	18	33	51	160	50	S012014C	US\$80.00
122-02-425	BT40-SF20-90	BT40-AD	20	33	42	90	52	S016016C	US\$58.67
122-02-426	BT40-SF20-120	BT40-AD	20	33	42	120	52	S016016C	US\$70.00
122-02-427	BT40-SF20-160	BT40-AD	20	33	51	160	52	S016016C	US\$80.00
122-02-428	BT40-SF25-100	BT40-AD	25	44	53	100	58	S016016C	US\$61.00
122-02-429	BT40-SF25-120	BT40-AD	25	44	53	120	58	S016016C	US\$72.67
122-02-430	BT40-SF25-160	BT40-AD	25	44	60	160	58	S016016C	US\$83.33
122-02-501	BT50-SFX06-100	BT50-AD	6	21	27	100	36	S005014C	US\$94.40
122-02-502	BT50-SFX06-120	BT50-AD	6	21	27	120	36	S005014C	US\$104.00
122-02-503	BT50-SFX06-160	BT50-AD	6	21	32	160	36	S005014C	US\$123.60
122-02-504	BT50-SF08-100	BT50-AD	8	21	27	100	36	S006014C	US\$78.80
122-02-505	BT50-SF08-120	BT50-AD	8	21	27	120	36	S006014C	US\$88.00
122-02-506	BT50-SF08-160	BT50-AD	8	21	32	160	36	S006014C	US\$107.60
122-02-507	BT50-SF10-100	BT50-AD	10	24	32	100	42	S008014C	US\$78.80
122-02-508	BT50-SF10-120	BT50-AD	10	24	32	120	42	S008014C	US\$88.00

ADD: C-8F NO.6, HANGKONG ROAD, FENGDE INTERNATIONAL PLAZA, CHENGDU, SICHUAN, CHINA

TEL: 028-86741971 86741739 FAX: 028-86756837 86750017

E-MAIL: sales@sctools.com service@sctools.com

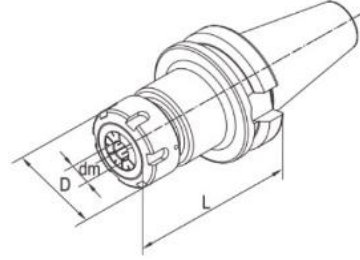
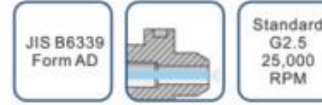
HARLINGEN®

122-02-509	BT50-SF10-160	BT50-AD	10	24	34	160	42	S008014C	US\$107.60
122-02-510	BT50-SF12-100	BT50-AD	12	24	32	100	47	S008014C	US\$78.80
122-02-511	BT50-SF12-120	BT50-AD	12	24	32	120	47	S008014C	US\$88.00
122-02-512	BT50-SF12-160	BT50-AD	12	24	34	160	47	S008014C	US\$107.60
122-02-513	BT50-SF14-100	BT50-AD	14	27	34	100	47	S008014C	US\$78.80
122-02-514	BT50-SF14-120	BT50-AD	14	27	34	120	47	S008014C	US\$88.00
122-02-515	BT50-SF14-160	BT50-AD	14	27	42	160	47	S008014C	US\$107.60
122-02-516	BT50-SF16-100	BT50-AD	16	27	34	100	50	S012014C	US\$78.80
122-02-517	BT50-SF16-120	BT50-AD	16	27	34	120	50	S012014C	US\$88.00
122-02-518	BT50-SF16-160	BT50-AD	16	27	42	160	50	S012014C	US\$107.60
122-02-519	BT50-SF18-100	BT50-AD	18	33	42	100	50	S012014C	US\$78.80
122-02-520	BT50-SF18-120	BT50-AD	18	33	42	120	50	S012014C	US\$88.00
122-02-521	BT50-SF18-160	BT50-AD	18	33	51	160	50	S012014C	US\$107.60
122-02-522	BT50-SF20-100	BT50-AD	20	33	42	100	52	S016016C	US\$78.80
122-02-523	BT50-SF20-120	BT50-AD	20	33	42	120	52	S016016C	US\$88.00
122-02-524	BT50-SF20-160	BT50-AD	20	33	51	160	52	S016016C	US\$107.60
122-02-525	BT50-SF25-110	BT50-AD	25	44	53	110	58	S016016C	US\$78.80
122-02-526	BT50-SF25-135	BT50-AD	25	44	60	135	58	S016016C	US\$88.00
122-02-527	BT50-SF25-160	BT50-AD	25	44	60	160	58	S016016C	US\$107.60
122-02-528	BT50-SF32-110	BT50-AD	32	44	53	110	58	S016016C	US\$78.80
122-02-529	BT50-SF32-135	BT50-AD	32	44	60	135	58	S016016C	US\$88.00
122-02-530	BT50-SF32-160	BT50-AD	32	44	60	160	58	S016016C	US\$107.60

HARLINGEN®

ER COLLET CHUCK

- Radial run-out less than 0.01mm.
- Constructed of alloy steel for long, durable service life.
- For clamping tools with plain shank in collets to DIN6499.
- Supplied with high performance clamping nut.



Order No.	Modle	Shank	Size(mm)			Nuts	Screw	For Collets	Wrench	Unit Price
			dm	D	L					
122-04-301	BT30-ER11-60	BT30-AD	0.5-7	19	60	CN11HS	SER11C	ER11	W17D	US\$34.67
122-04-302	BT30-ER11--90	BT30-AD	0.5-7	19	90					US\$34.67
122-04-303	BT30-ER16-60	BT30-AD	0.5-10	28	60	CN16HS	SER16C	ER16	W25D	US\$24.00
122-04-304	BT30-ER16-90	BT30-AD	0.5-10	28	90					US\$24.00
122-04-305	BT30-ER16-120	BT30-AD	0.5-10	28	120					US\$38.67
122-04-306	BT30-ER20-60	BT30-AD	1.0-13	34	60	CN20HS	SER20C	ER20	W30D	US\$24.00
122-04-307	BT30-ER20-90	BT30-AD	1.0-13	34	90					US\$24.00
122-04-308	BT30-ER20-120	BT30-AD	1.0-13	34	120					US\$38.67
122-04-309	BT30-ER25-60	BT30-AD	1.0-16	42	60	CN25B	SER25C	ER25	YER25B	US\$24.00
122-04-310	BT30-ER25-90	BT30-AD	1.0-16	42	90					US\$24.00
122-04-311	BT30-ER25-120	BT30-AD	1.0-16	42	120					US\$38.67
122-04-312	BT30-ER32-60	BT30-AD	2.0-20	50	60	CN32B	SER32C	ER32	YER32B	US\$24.00
122-04-313	BT30-ER32-90	BT30-AD	2.0-20	50	90					US\$24.00
122-04-401	BT40-ER11-70	BT40-AD	0.5-7	19	70	CN11HS	SER11C	ER11	W17D	US\$27.73
122-04-402	BT40-ER11-120	BT40-AD	0.5-7	19	120	CN11HS	SER11C	ER11		US\$31.47
122-04-403	BT40-ER16-70	BT40-AD	0.5-10	28	70	CN16HS	SER16C	ER16	W25D	US\$24.00
122-04-404	BT40-ER16-100	BT40-AD	0.5-10	28	100	CN16HS	SER16C	ER16	W25D	US\$24.00
122-04-405	BT40-ER16-120	BT40-AD	0.5-10	28	120	CN16HS	SER16C	ER16	W25D	US\$31.47
122-04-406	BT40-ER16-150	BT40-AD	0.5-10	28	150	CN16HS	SER16C	ER16	W25D	US\$47.33

HARLINGEN®

122-04-407	BT40-ER20-80	BT40-AD	1.0-13	34	80	CN20HS	SER20C	ER20	W30D	US\$24.00
122-04-408	BT40-ER20-100	BT40-AD	1.0-13	34	100	CN20HS	SER20C	ER20	W30D	US\$24.00
122-04-409	BT40-ER20-120	BT40-AD	1.0-13	34	120	CN20HS	SER20C	ER20	W30D	US\$31.47
122-04-410	BT40-ER20-150	BT40-AD	1.0-13	34	150	CN20HS	SER20C	ER20	W30D	US\$47.33
122-04-411	BT40-ER25-80	BT40-AD	1.0-16	42	80	CN25B	SER25C	ER25	YER25B	US\$24.00
122-04-412	BT40-ER25-100	BT40-AD	1.0-16	42	100	CN25B	SER25C	ER25	YER25B	US\$24.00
122-04-413	BT40-ER25-120	BT40-AD	1.0-16	42	120	CN25B	SER25C	ER25	YER25B	US\$33.07
122-04-414	BT40-ER25-150	BT40-AD	1.0-16	42	150	CN25B	SER25C	ER25	YER25B	US\$47.33
122-04-415	BT40-ER32-60	BT40-AD	2.0-20	50	60	CN32B	SER32C	ER32	YER32B	US\$24.00
122-04-416	BT40-ER32-80	BT40-AD	2.0-20	50	80	CN32B	SER32C	ER32	YER32B	US\$24.00
122-04-417	BT40-ER32-100	BT40-AD	2.0-20	50	100	CN32B	SER32C	ER32	YER32B	US\$24.00
122-04-418	BT40-ER32-120	BT40-AD	2.0-20	50	120	CN32B	SER32C	ER32	YER32B	US\$33.07
122-04-419	BT40-ER32-150	BT40-AD	2.0-20	50	150	CN32B	SER32C	ER32	YER32B	US\$47.33
122-04-420	BT40-ER40-80	BT40-AD	3.0-26	63	80	CN40B	SER40C	ER40	YER40B	US\$28.67
122-04-421	BT40-ER40-100	BT40-AD	3.0-26	63	100	CN40B	SER40C	ER40	YER40B	US\$28.67
122-04-422	BT40-ER40-120	BT40-AD	3.0-26	63	120	CN40B	SER40C	ER40	YER40B	US\$34.67
122-04-423	BT40-ER40-150	BT40-AD	3.0-26	63	150	CN40B	SER40C	ER40	YER40B	US\$50.00
122-04-501	BT50-ER16-80	BT50-AD	0.5-10	28	80	CN16HS	SER16C	ER16	W25D	US\$48.80
122-04-502	BT50-ER16-100	BT50-AD	0.5-10	28	100	CN16HS	SER16C	ER16	W25D	US\$48.80
122-04-503	BT50-ER16-120	BT50-AD	0.5-10	28	120	CN16HS	SER16C	ER16	W25D	US\$54.40
122-04-504	BT50-ER16-165	BT50-AD	0.5-10	28	165	CN16HS	SER16C	ER16	W25D	US\$73.60
122-04-505	BT50-ER20-80	BT50-AD	1.0-13	34	80	CN20HS	SER20C	ER20	W30D	US\$48.80
122-04-506	BT50-ER20-100	BT50-AD	1.0-13	34	100	CN20HS	SER20C	ER20	W30D	US\$48.80
122-04-507	BT50-ER20-120	BT50-AD	1.0-13	34	120	CN20HS	SER20C	ER20	W30D	US\$54.40
122-04-508	BT50-ER20-135	BT50-AD	1.0-13	34	135	CN20HS	SER20C	ER20	W30D	US\$57.20
122-04-509	BT50-ER20-165	BT50-AD	1.0-13	34	165	CN20HS	SER20C	ER20	W30D	US\$73.60
122-04-510	BT50-ER25-80	BT50-AD	1.0-16	42	80	CN25B	SER25C	ER25	YER25B	US\$48.80
122-04-511	BT50-ER25-100	BT50-AD	1.0-16	42	100	CN25B	SER25C	ER25	YER25B	US\$48.80
122-04-512	BT50-ER25-120	BT50-AD	1.0-16	42	120	CN25B	SER25C	ER25	YER25B	US\$54.40
122-04-513	BT50-ER25-165	BT50-AD	1.0-16	42	165	CN25B	SER25C	ER25	YER25B	US\$73.60
122-04-514	BT50-ER32-90	BT50-AD	2.0-20	50	90	CN32B	SER32C	ER32	YER32B	US\$48.80
122-04-515	BT50-ER32-100	BT50-AD	2.0-20	50	100	CN32B	SER32C	ER32	YER32B	US\$48.80
122-04-516	BT50-ER32-120	BT50-AD	2.0-20	50	120	CN32B	SER32C	ER32	YER32B	US\$54.40
122-04-517	BT50-ER32-165	BT50-AD	2.0-20	50	165	CN32B	SER32C	ER32	YER32B	US\$73.60
122-04-518	BT50-ER32-200	BT50-AD	2.0-20	50	200	CN32B	SER32C	ER32	YER32B	US\$108.80
122-04-519	BT50-ER32-250	BT50-AD	2.0-20	50	250	CN32B	SER32C	ER32	YER32B	US\$128.00
122-04-520	BT50-ER40-100	BT50-AD	3.0-26	63	100	CN40B	SER40C	ER40	YER40B	US\$52.00
122-04-521	BT50-ER40-120	BT50-AD	3.0-26	63	120	CN40B	SER40C	ER40	YER40B	US\$57.20
122-04-522	BT50-ER40-165	BT50-AD	3.0-26	63	165	CN40B	SER40C	ER40	YER40B	US\$73.60

ADD: C-8F NO.6, HANGKONG ROAD, FENGDE INTERNATIONAL PLAZA, CHENGDU, SICHUAN, CHINA

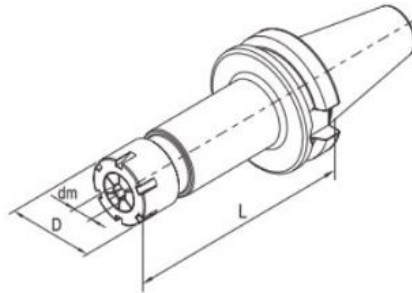
TEL: 028-86741971 86741739 FAX: 028-86756837 86750017

E-MAIL: sales@sctools.com service@sctools.com

122-04-523	BT50-ER40-200	BT50-AD	3.0-26	63	200	CN40B	SER40C	ER40	YER40B	US\$108.80
------------	---------------	---------	--------	----	-----	-------	--------	------	--------	------------

ER SLIM COLLET CHUCK

- For clamping tools with plain shank in collets to DIN6499.
- Supplied with fine balanced mini clamping nut for high speed.



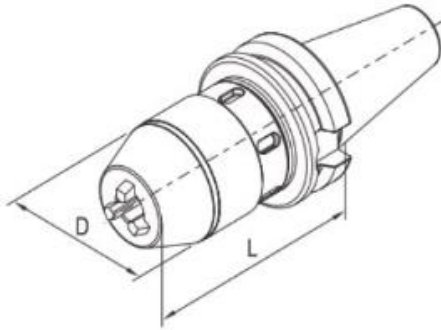
Order No.	Modle	Shank	Size(mm)			Nuts	Screw	For Collets	Wrench	Unit Price
			dm	D	L					
122-04-314	BT30-ER11-60(M)	BT30-AD	0.5-7	16	60	CNM11	SER11C	ER11	WM11	US\$49.33
122-04-315	BT30-ER11-90(M)	BT30-AD	0.5-7	16	90	CNM11	SER11C	ER11	WM11	US\$49.33
122-04-316	BT30-ER11-120(M)	BT30-AD	0.5-7	16	120	CNM11	SER11C	ER11	WM11	US\$51.87
122-04-317	BT30-ER16-60(M)	BT30-AD	0.5-10	23	60	CNM16	SER16C	ER16	WM16	US\$48.00
122-04-318	BT30-ER16-90(M)	BT30-AD	0.5-10	23	90	CNM16	SER16C	ER16	WM16	US\$48.00
122-04-319	BT30-ER16-120(M)	BT30-AD	0.5-10	23	120	CNM16	SER16C	ER16	WM16	US\$50.67
122-04-320	BT30-ER20-60(M)	BT30-AD	1.0-13	28	60	CNM20	SER20C	ER20	WM20	US\$48.00
122-04-321	BT30-ER20-90(M)	BT30-AD	1.0-13	28	90	CNM20	SER20C	ER20	WM20	US\$48.00
122-04-322	BT30-ER20-120(M)	BT30-AD	1.0-13	28	120	CNM20	SER20C	ER20	WM20	US\$50.67
122-04-424	BT40-ER11-90(M)	BT40-AD	0.5-7	16	90	CNM11	SER11C	ER11	WM11	US\$49.33
122-04-425	BT40-ER11-120(M)	BT40-AD	0.5-7	16	120	CNM11	SER11C	ER11	WM11	US\$51.87
122-04-426	BT40-ER11-150(M)	BT40-AD	0.5-7	16	150	CNM11	SER11C	ER11	WM11	US\$63.33
122-04-427	BT40-ER16-90(M)	BT40-AD	0.5-10	23	90	CNM16	SER16C	ER16	WM16	US\$48.00
122-04-428	BT40-ER16-120(M)	BT40-AD	0.5-10	23	120	CNM16	SER16C	ER16	WM16	US\$50.67
122-04-429	BT40-ER16-150(M)	BT40-AD	0.5-10	23	150	CNM16	SER16C	ER16	WM16	US\$60.00
122-04-430	BT40-ER20-95(M)	BT40-AD	1.0-13	28	95	CNM20	SER20C	ER20	WM20	US\$48.00
122-04-431	BT40-ER20-120(M)	BT40-AD	1.0-13	28	120	CNM20	SER20C	ER20	WM20	US\$50.67
122-04-432	BT40-ER20-150(M)	BT40-AD	1.0-13	28	150	CNM20	SER20C	ER20	WM20	US\$60.00

122-04-524	BT50-ER16-105(M)	BT50-AD	0.5-10	23	105	CNM16	SER16C	ER16	WM16	US\$68.80
122-04-525	BT50-ER16-135(M)	BT50-AD	0.5-10	23	135	CNM16	SER16C	ER16	WM16	US\$84.80
122-04-526	BT50-ER16-165(M)	BT50-AD	0.5-10	23	165	CNM16	SER16C	ER16	WM16	US\$92.00
122-04-527	BT50-ER20-105(M)	BT50-AD	1.0-13	28	105	CNM20	SER20C	ER20	WM20	US\$68.80
122-04-528	BT50-ER20-135(M)	BT50-AD	1.0-13	28	135	CNM20	SER20C	ER20	WM20	US\$84.80
122-04-529	BT50-ER20-165(M)	BT50-AD	1.0-13	28	165	CNM20	SER20C	ER20	WM20	US\$92.00

INTEGRAL DRILL CHUCK HOLDER

- Radial run-out less than 0.05mm.
- Wrench-Lock chucks incorporate wrench groove for additional tightening force.
- Integral shank design provides for greater accuracy and safety.
- Wrench included.

JIS B6339
Form A

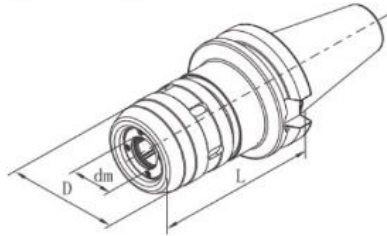
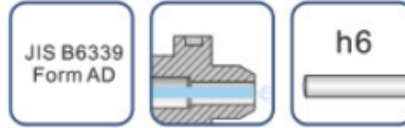


Order No.	Modle	Shank	Capacity	Size(mm)		Wrench	Unit Price
				D	L		
122-12-301	BT30-KPU08-80	BT30-A	0.5-8	37.5	80	WCN20	US\$68.00
122-12-302	BT30-KPU13-110	BT30-A	1.0-13	50.5	110	WCN32	US\$68.00
122-12-401	BT40-KPU08-80	BT40-A	0.5-8	37.5	80	WCN20	US\$68.00
122-12-402	BT40-KPU13-95	BT40-A	1.0-13	50.5	95	WCN32	US\$68.00
122-12-403	BT40-KPU16-100	BT40-A	3-16	57	100	WCN32	US\$70.67
122-12-501	BT50-KPU13-105	BT50-A	1.0-13	50.5	105	WCN32	US\$92.00
122-12-502	BT50-KPU16-110	BT50-A	3-16	57	110	WCN32	US\$96.00

HARLINGEN®

POWER MILLING CHUCK

- Very high clamping force and High stability improving surface quality and tool life time
- Optimised design resulting in Ideal damping characteristics and low vibration.
- Radial run-out less than 0.01mm.
- For clamping cutting tools with cylindric shank tolerance h6
- Flexible clamping range by using reducing sleeve for various tool shank.

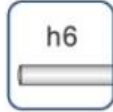


Order No.	Modle	Shank	Size(mm)			For Collets	Wrench	Unit Price
			dm	D	L			
122-03-301	BT30-C20-95	BT30-AD	20	55	95	C20	WC20	US\$76.67
122-03-401	BT40-C20-95	BT40-AD	20	55	95	C20	WC20	US\$76.67
122-03-402	BT40-C20-120	BT40-AD	20	55	120	C20	WC20	US\$84.00
122-03-403	BT40-C25-100	BT40-AD	25	62	100	C25	WC25	US\$76.67
122-03-404	BT40-C25-120	BT40-AD	25	62	120	C25	WC25	US\$84.00
122-03-405	BT40-C32-105	BT40-AD	32	72	105	C32	WC32	US\$76.67
122-03-501	BT50-C20-105	BT50AD	20	55	105	C20	WC20	US\$104.00
122-03-502	BT50-C20-135	BT50AD	20	55	135	C20	WC20	US\$109.20
122-03-503	BT50-C25-110	BT50AD	25	62	110	C25	WC25	US\$104.00
122-03-504	BT50-C25-135	BT50AD	25	62	135	C25	WC25	US\$109.20
122-03-505	BT50-C32-110	BT50AD	32	72	110	C32	WC32	US\$104.00
122-03-506	BT50-C32-135	BT50AD	32	72	135	C32	WC32	US\$109.20
122-03-507	BT50-C42-110	BT50AD	42	87	110	C42	WC42	US\$144.00

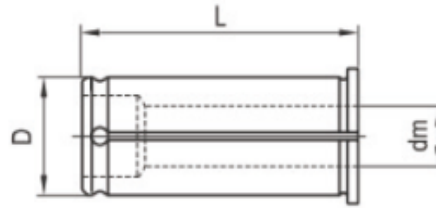
HARLINGEN®

REDUCING SLEEVE FOR POWER MILLING CHUCK

- For drill, milling, reaming.
- Radial run-out less than 0.01mm.
- For clamping cutting tools with cylindrical shank tolerance h6.



Order No.	Modle	Size (mm)			Unit Price
		dm	D	L	
100-03-001	C20-3	3	20	55	US\$6.57
100-03-002	C20-4	4			US\$6.57
100-03-003	C20-5	5			US\$6.57
100-03-004	C20-6	6			US\$6.57
100-03-005	C20-8	8			US\$6.57
100-03-006	C20-10	10			US\$6.57
100-03-007	C20-12	12			US\$6.57
100-03-008	C20-14	14			US\$6.57
100-03-009	C20-16	16			US\$6.57
100-03-010	C25-4	4			25
100-03-011	C25-5	5	US\$6.57		
100-03-012	C25-6	6	US\$6.57		
100-03-013	C25-8	8	US\$6.57		
100-03-014	C25-10	10	US\$6.57		
100-03-015	C25-12	12	US\$6.57		
100-03-016	C25-14	14	US\$6.57		
100-03-017	C25-16	16	US\$6.57		
100-03-018	C25-18	18	US\$6.57		
100-03-019	C25-20	20	US\$6.57		



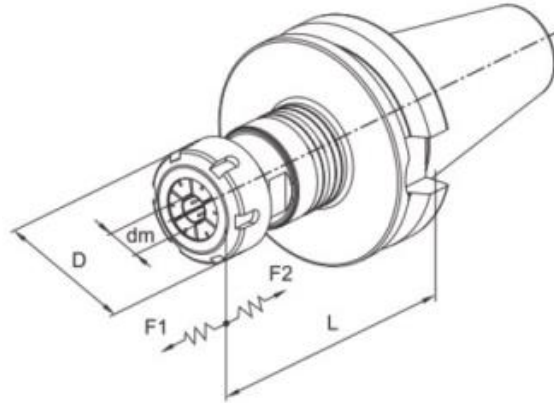
HARLINGEN®

100-03-020	C32-6	6	32	65	US\$6.90
100-03-021	C32-8	8			US\$6.90
100-03-022	C32-10	10			US\$6.90
100-03-023	C32-12	12			US\$6.90
100-03-024	C32-14	14			US\$6.90
100-03-025	C32-16	16			US\$6.90
100-03-026	C32-18	18			US\$6.90
100-03-027	C32-20	20			US\$6.90
100-03-028	C32-25	25			US\$6.90
100-03-029	C42-6	6			42
100-03-030	C42-8	8	US\$15.75		
100-03-031	C42-10	10	US\$15.75		
100-03-032	C42-12	12	US\$15.75		
100-03-033	C42-14	14	US\$15.75		
100-03-034	C42-16	16	US\$15.75		
100-03-035	C42-18	18	US\$15.75		
100-03-036	C42-20	20	US\$15.75		
100-03-037	C42-25	25	US\$15.75		
100-03-038	C42-32	32	US\$15.75		

HARLINGEN®

AUTOMATIC MICRO-COMPENSATION TAPPING CHUCK

- Compensation capacity $\pm 0.5\text{mm}$.
- Precision producing true thread with quality surface.
- Improving effectiveness and tap life time.
- For NC machines and machining center.
- For right hand and left hand thread.

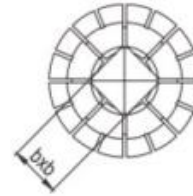
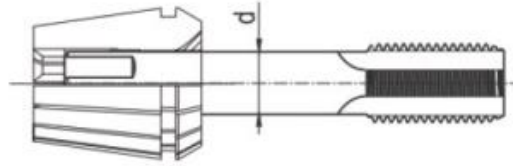


Order No.	Model	SHANK	capacity	Size(mm)					Nuts	for Collets	Unit Price
				D	dm	L	F1	F2			
122-13-301	BT30-V20-80	BT30-AD	M4-M12 (No.8-7/16)	34	3-10	80	0.5	0.5	CN20HS	ER20..	US\$62.00
122-13-401	BT40-V20-85	BT40-AD		34	3-10	85	0.5	0.5	CN20HS	ER20..	US\$62.00
122-13-501	BT50-V20-100	BT50-AD		34	3-10	100	0.5	0.5	CN20HS	ER20..	US\$76.67
122-13-402	BT40-V32-100	BT40-AD	M4-M20 (No.8-3/4)	50	3-16	100	0.5	0.5	CN32B	ER32..	US\$62.00
122-13-502	BT50-V32-115	BT50-AD		50	3-16	115	0.5	0.5	CN32B	ER32..	US\$76.67

HARLINGEN®

ER TAP COLLET

• Special design with internal square drive for machine taps.

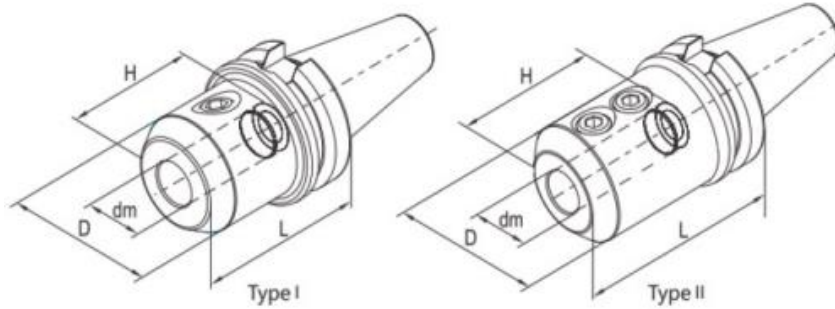


Order No.	Modle	For taps					Unit Price
		Shank d(mm)	Square b(mm)	ISO529/IS O2283	DIN374/DI N376	JISB4430	
100-13-201	ER20-6.3B5	6.3	5	M8	M8	M6/M8	US\$5.10
100-13-202	ER20-7B5.5	7	5.5	-	M10	M10	US\$5.10
100-13-203	ER20-8B6.3	8	6.3	M10	-	-	US\$5.10
100-13-204	ER20-8.5B6.5	8.5	6.5	-	-	M12	US\$5.10
100-13-205	ER20-9B7.1	9	7.1	M12	M12	-	US\$5.10
100-13-301	ER32-6.3B5	6.3	5	M8	M8	M6/M8	US\$5.43
100-13-302	ER32-7B5.5	7	5.5	-	M10	M10	US\$5.43
100-13-303	ER32-8B6.3	8	6.3	M10	-	-	US\$5.43
100-13-304	ER32-8.5B6.5	8.5	6.5	-	-	M12	US\$5.43
100-13-305	ER32-9B7.1	9	7.1	M12	M12	-	US\$5.43
100-13-306	ER32-12B9	12	9	-	M16	-	US\$5.43
100-13-307	ER32-12.5B10	12.5	10	M16	-	M16	US\$5.43
100-13-308	ER32-14B11.2	14	11.2	M18/M20	M18	M18	US\$5.43
100-13-309	ER32-15B12	15	12	-	-	M20	US\$5.43
100-13-310	ER32-16B12	16	12	-	M20	-	US\$5.43

HARLINGEN®

SIDE LOCK HOLDER

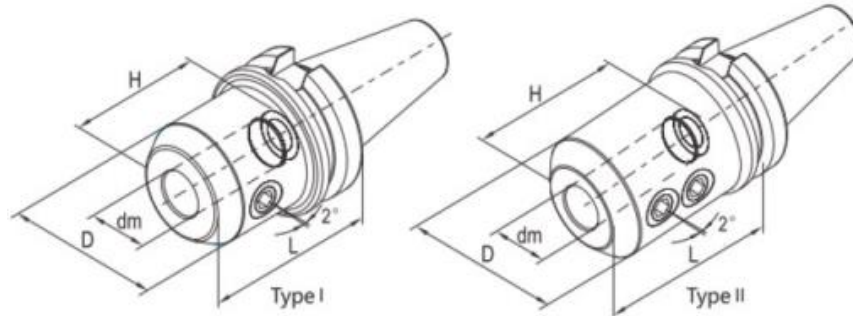
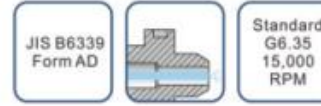
• For clamping tools with weldon shank to DIN1835 form B and DIN6535 form HB.



Order No.	Modle	Shank	Size(mm)				Screw	Type	Unit Price
			dm	D	L	H			
122-05-301	BT30-XP16-63	BT30-AD	16	48	63	52	SXP16	I	US\$27.87
122-05-302	BT30-XP20-70	BT30-AD	20	50	70	54	SXP20	I	US\$27.87
122-05-401	BT40-XP16-63	BT40-AD	16	48	63	52	SXP16	I	US\$27.87
122-05-402	BT40-XP20-70	BT40-AD	20	50	70	54	SXP20	I	US\$27.87
122-05-403	BT40-XP25-90	BT40-AD	25	60	90	66	SXP25	II	US\$29.07
122-05-404	BT40-XP32-100	BT40-AD	32	68	100	70	SXP32	II	US\$29.07
122-05-501	BT50-XP16-80	BT50-AD	16	48	80	52	SXP16	I	US\$43.60
122-05-502	BT50-XP20-80	BT50-AD	20	50	80	54	SXP20	I	US\$43.60
122-05-503	BT50-XP25-100	BT50-AD	25	60	100	66	SXP25	II	US\$46.24
122-05-504	BT50-XP32-105	BT50-AD	32	68	105	70	SXP32	II	US\$46.24
122-05-505	BT50-XP40-120	BT50-AD	40	84	120	80	SXP32	II	US\$46.24

2° SIDE LOCK HOLDER

- For clamping tools with parallel shank and inclined clamping flat(2°)
DIN1835 form E and DIN6535 form HE.



Order No.	Modle	Shank	Size(mm)				Screw	Screw	Type	Unit Price
			dm	D	L	H				
122-05-303	BT30-XPD16-63	BT30-AD	16	45	63	52	SXP16	S012014C	I	US\$32.00
122-05-304	BT30-XPD20-75	BT30-AD	20	52	75	54	SXP20	S016016C	I	US\$32.00
122-05-305	BT30-XPD25-85	BT30-AD	25	65	85	59	SXP25	S020016C	II	US\$33.33
122-05-405	BT40-XPD16-75	BT40-AD	16	48	75	52	SXP16	S012014C	I	US\$32.00
122-05-406	BT40-XPD20-75	BT40-AD	20	52	75	54	SXP20	S016016C	I	US\$32.00
122-05-407	BT40-XPD25-90	BT40-AD	25	65	90	59	SXP25	S020016C	II	US\$33.33
122-05-408	BT40-XPD25-165	BT40-AD	25	65	165	59	SXP25	S020016C	II	US\$40.20
122-05-409	BT40-XPD32-105	BT40-AD	32	72	105	63	SXP32	S020016C	II	US\$33.33
122-05-410	BT40-XPD32-165	BT40-AD	32	72	165	63	SXP32	S020016C	II	US\$40.20
122-05-506	BT50-XPD16-80	BT50-AD	16	48	80	52	SXP16	S012014C	I	US\$50.40
122-05-507	BT50-XPD20-80	BT50-AD	20	52	80	54	SXP20	S016016C	I	US\$50.40
122-05-508	BT50-XPD25-100	BT50-AD	25	65	100	59	SXP25	S020016C	II	US\$53.20
122-05-509	BT50-XPD25-165	BT50-AD	25	65	165	59	SXP25	S020016C	II	US\$64.00
122-05-510	BT50-XPD32-105	BT50-AD	32	72	105	63	SXP32	S020016C	II	US\$53.20
122-05-511	BT50-XPD32-165	BT50-AD	32	72	165	63	SXP32	S020016C	II	US\$64.00

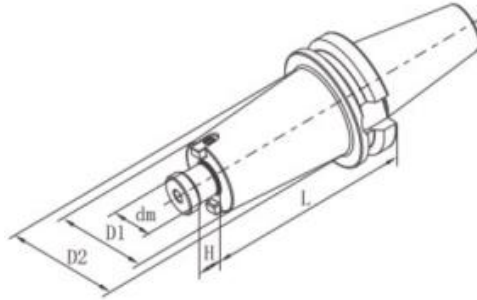
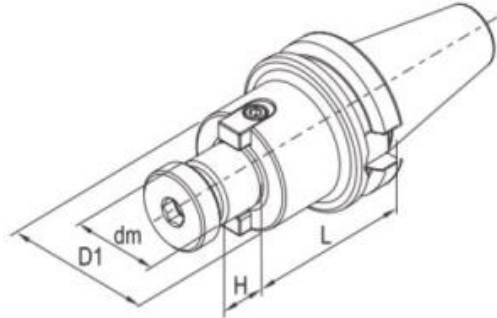
HARLINGEN®

SHELL END MILL ARBOR

• For clamping shell end mill and milling cutter.

JIS B6339
Form A

Standard
G6.3
15,000
RPM



Order No.	Modle	Shank	Size(mm)				Screw	Key	Screw	Unit Price
			dm	D1	L	H				
121-07-301	BT30-XMB16-60	BT30-A	16	34	60	17	MS08030	JC08017	MS03008	US\$29.33
121-07-302	BT30-XMB22-45	BT30-A	22	42	45	19	MS10030	JC10021	MS04010	US\$29.33
121-07-303	BT30-XMB27-45	BT30-A	27	60	45	21	SXM27	JC12023	MS05016	US\$29.33
121-07-401	BT40-XMB16-60	BT40-A	16	34	60	17	MS08030	JC08017	MS03008	US\$29.33
121-07-402	BT40-XMB16-90	BT40-A	16	34	90	17	MS08030	JC08017	MS03008	US\$30.67
121-07-403	BT40-XMB16-120	BT40-A	16	34	120	17	MS08030	JC08017	MS03008	US\$32.27
121-07-404	BT40-XMB22-60	BT40-A	22	42	60	19	MS10030	JC10021	MS04010	US\$29.33
121-07-405	BT40-XMB22-90	BT40-A	22	42	90	19	MS10030	JC10021	MS04010	US\$30.67
121-07-406	BT40-XMB22-120	BT40-A	22	42	120	19	MS10030	JC10021	MS04010	US\$32.27
121-07-407	BT40-XMB27-60	BT40-A	27	60	60	21	SXM27	JC12023	MS05016	US\$29.33
121-07-408	BT40-XMB27-90	BT40-A	27	60	90	21	SXM27	JC12023	MS05016	US\$30.67
121-07-409	BT40-XMB27-120	BT40-A	27	60	120	21	SXM27	JC12023	MS05016	US\$32.27
121-07-410	BT40-XMB32-60	BT40-A	32	78	60	24	SXM32	JC14020	MS06020	US\$33.00
121-07-411	BT40-XMB40-60	BT40-A	40	89	60	27	SXM40	KXM40	MS08020	US\$33.73

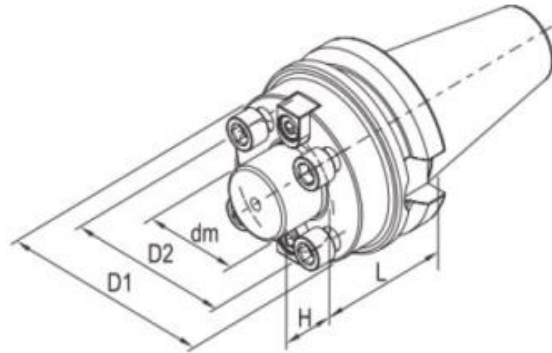
Order No.	Modle	Shank	Size(mm)					Screw	Key	Screw	Unit Price
			dm	D1	D2	L	H				
121-07-501	BT50-XMB16-60	BT50-A	16	34	-	60	17	MS08030	JC08017	MS03008	US\$46.64
121-07-502	BT50-XMB16-90	BT50-A	16	34	-	90	17	MS08030	JC08017	MS03008	US\$48.00
121-07-503	BT50-XMB16-120	BT50-A	16	34	-	120	17	MS08030	JC08017	MS03008	US\$49.28
121-07-504	BT50-XMB22-60	BT50-A	22	42	-	60	19	MS10030	JC10021	MS04010	US\$46.64
121-07-505	BT50-XMB22-90	BT50-A	22	42	-	90	19	MS10030	JC10021	MS04010	US\$48.00
121-07-506	BT50-XMB22-120	BT50-A	22	42	-	120	19	MS10030	JC10021	MS04010	US\$49.28
121-07-507	BT50-XMB22-150	BT50-A	22	42	60	150	19	MS10030	JC10021	MS04010	US\$68.00
121-07-508	BT50-XMB22-200	BT50-A	22	42	60	22	19	MS10030	JC10021	MS04010	US\$89.60
121-07-509	BT50-XMB22-250	BT50-A	22	42	60	250	19	MS10030	JC10021	MS04010	US\$112.00
121-07-510	BT50-XMB27-60	BT50-A	27	60	-	60	21	SXM27	JC12023	MS05016	US\$46.64
121-07-511	BT50-XMB27-90	BT50-A	27	60	-	90	21	SXM27	JC12023	MS05016	US\$48.00
121-07-512	BT50-XMB27-120	BT50-A	27	60	-	120	21	SXM27	JC12023	MS05016	US\$49.28
121-07-513	BT50-XMB27-150	BT50-A	27	60	75	150	21	SXM27	JC12023	MS05016	US\$68.00
121-07-514	BT50-XMB27-200	BT50-A	27	60	75	200	21	SXM27	JC12023	MS05016	US\$89.60
121-07-515	BT50-XMB27-250	BT50-A	27	60	75	250	21	SXM27	JC12023	MS05016	US\$112.00
121-07-516	BT50-XMB27-300	BT50-A	27	60	75	300	21	SXM27	JC12023	MS05016	US\$134.40
121-07-517	BT50-XMB32-60	BT50-A	32	78	-	60	24	SXM32	JC14020	MS06020	US\$50.16
121-07-518	BT50-XMB32-90	BT50-A	32	78	-	90	24	SXM32	JC14020	MS06020	US\$54.40
121-07-519	BT50-XMB32-120	BT50-A	32	78	-	120	24	SXM32	JC14020	MS06020	US\$60.80
121-07-520	BT50-XMB32-150	BT50-A	32	78	-	150	24	SXM32	JC14020	MS06020	US\$70.00
121-07-521	BT50-XMB32-200	BT50-A	32	78	-	200	24	SXM32	JC14020	MS06020	US\$91.36
121-07-522	BT50-XMB40-60	BT50-A	40	89	-	60	27	SXM40	KXM40	MS08020	US\$51.04
121-07-523	BT50-XMB40-90	BT50-A	40	89	-	90	27	SXM40	KXM40	MS08020	US\$59.20
121-07-524	BT50-XMB40-120	BT50-A	40	89	-	120	27	SXM40	KXM40	MS08020	US\$65.60
121-07-525	BT50-XMB40-150	BT50-A	40	89	-	150	27	SXM40	KXM40	MS08020	US\$72.00

FACE MILLING CUTTER HOLDER

- For clamping face milling cutter with 4 holes.
- Increased collar contact surface.
- Supplied with lock screws.

JIS B6339
Form A

Standard
G6.3
8,000
RPM



Order No.	Modle	Shank	Size(mm)					Screw	Key	Screw	Unit Price
			dm	D1	D2	L	H				
121-09-401	BT40-XMC40-60	BT40-A	40	89	66.7	60	27	MS12045(4)	KXM40	MS08020	US\$33.73
121-09-501	BT50-XMC40-75	BT50-A	40	89	66.7	75	27	MS12045(4)	KXM40	MS08020	US\$51.04
121-09-502	BT50-XMC60-75	BT50-A	60	129	101.6	75	38	MS16045(4)	KXMC60	MS10025	US\$65.60

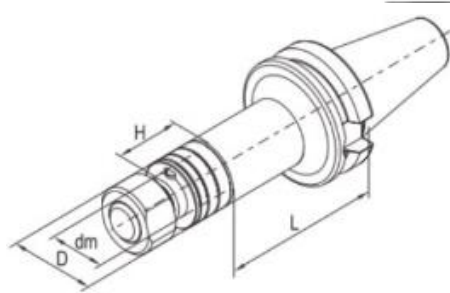
HARLINGEN®

SLOTING CUTTER HOLDER

- For clamping saws and side milling cutter.
- Furnished complete with assorted spacers, nut and key.

JIS B6339
Form A

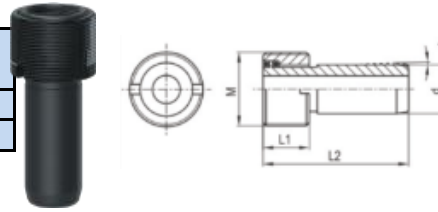
Standard
G6.3
8,000
RPM



Order No.	Modle	Shank	Size(mm)				Nuts	Spacer	Key	Unit Price
			dm	D	L	H				
121-10-401	BT40-XS22-75	BT40-A	22	34	75	30	MXS22	SD22	JA06020	US\$29.00
121-10-402	BT40-XS22-120	BT40-A	22	34	120	30	MXS22	SD22	JA06020	US\$31.20
121-10-403	BT40-XS27-75	BT40-A	27	40	75	30	MXS27	SD27	JA07022	US\$29.73
121-10-404	BT40-XS27-120	BT40-A	27	40	120	30	MXS27	SD27	JA07022	US\$31.20
121-10-405	BT40-XS32-90	BT40-A	32	46	90	30	MXS32	SD32	JA08022	US\$31.53
121-10-501	BT50-XS22-90	BT50-A	22	34	90	30	MXS22	SD22	JA06020	US\$45.76
121-10-502	BT50-XS22-135	BT50-A	22	34	135	30	MXS22	SD22	JA06020	US\$49.76
121-10-503	BT50-XS27-90	BT50-A	27	40	90	30	MXS27	SD27	JA07022	US\$46.64
121-10-504	BT50-XS27-135	BT50-A	27	40	135	30	MXS27	SD27	JA07022	US\$50.64
121-10-505	BT50-XS32-90	BT50-A	32	46	90	30	MXS32	SD32	JA08022	US\$47.52
121-10-506	BT50-XS32-135	BT50-A	32	46	135	30	MXS32	SD32	JA08022	US\$51.52
121-10-507	BT50-XS40-90	BT50-A	40	55	90	30	MXS40	SD40	JA10025	US\$48.40
121-10-508	BT50-XS40-135	BT50-A	40	55	135	30	MXS40	SD40	JA10025	US\$52.40
121-10-509	BT50-XS50-90	BT50-A	50	69	90	30	MXS50	SD50	JA12025	US\$54.40
121-10-510	BT50-XS50-135	BT50-A	50	69	135	30	MXS50	SD50	JA12025	US\$60.00

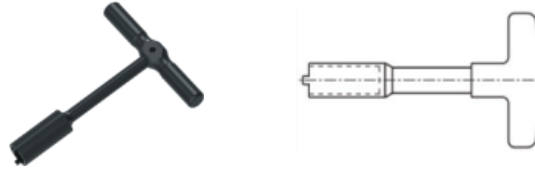
HSK COOLANT TUBES

Order No.	Modle	shank	Size(mm)				Unit Price
			M	d	L1	L2	
100-00-001	TU-HSK63	HSK63	M18x1	12	11.5	36.6	US\$9.98
100-00-002	TU-HSK100	HSK100	M24x1.5	16	15.5	44.2	US\$13.13



HSK COOLANT TUBE WRENCH

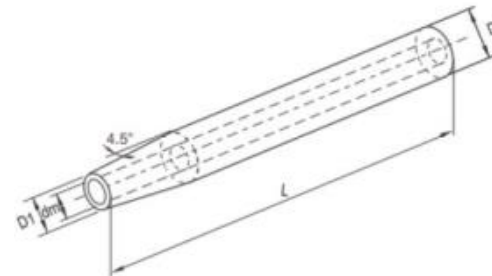
Order No.	Modle	shank	Unit Price
100-00-003	W-HSK63	HSK63	US\$15.96
100-00-004	W-HSK100	HSK100	US\$19.43



SHRINK FIT CHUCK EXTENSION

- Used in shrink fit chuck,hydraulic chuck and power milling chuck.
- For clamping cutting tools with cylinderic shank tolerance h6.
- Fit for high frequency heating maching.
- Avoid vibrations in the clamping system,resulting in increasing surface quality and tool life time.

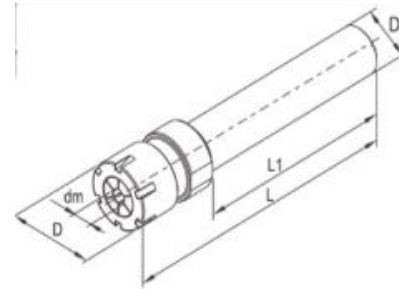
Order No.	Modle	Size(mm)				Unit Price
		dm	D	D1	L	
100-00-005	C12-SFX03-160	3	12	8	160	US\$77.85
100-00-006	C12-SFX04-160	4	12	8	160	US\$75.60
100-00-007	C16-SFX03-160	3	16	10	160	US\$77.85
100-00-008	C16-SFX04-160	4	16	10	160	US\$75.60
100-00-009	C16-SFX05-160	5	16	10	160	US\$71.10
100-00-010	C20-SFX05-160	5	20	14	160	US\$71.10
100-00-011	C16-SFX06-160	6	16	10	160	US\$65.70
100-00-012	C20-SFX06-160	6	20	14	160	US\$65.70
100-00-013	C20-SF08-160	8	20	14	160	US\$54.00
100-00-014	C25-SF08-160	8	25	19	160	US\$54.00
100-00-015	C25-SF10-160	10	25	20	160	US\$54.00
100-00-016	C25-SF12-160	12	25	20	160	US\$54.00
100-00-017	C25-SF14-160	14	25	20	160	US\$54.00
100-00-018	C25-SF16-160	16	25	22	160	US\$54.00
100-00-019	C32-SF10-160	10	32	24	160	US\$56.70
100-00-020	C32-SF12-160	12	32	24	160	US\$56.70



100-00-021	C32-SF14-160	14	32	27	160	US\$56.70
100-00-022	C32-SF16-160	16	32	27	160	US\$56.70
100-00-023	C32-SF18-160	18	32	27	160	US\$56.70
100-00-024	C32-SF20-160	20	32	27	160	US\$56.70

ER COLLET CHUCK EXTENTION

- Used in ER collet chuck, power milling chuck.
- For clamping cutting tools with cylindric shank.

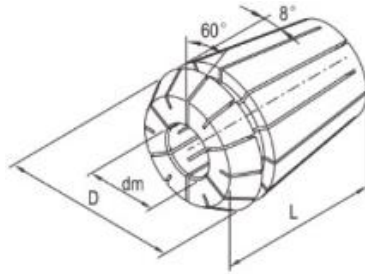


Order No.	Model	Size(mm)					Nuts	Screw	for Collets	Wrench	Unit Price
		dm	D	D1	L1	L					
100-00-025	C16-ER11-50(M)	0.5-7	16	16	50	77	CNM11	S006014C	ER11	WM11	US\$27.00
100-00-026	C16-ER11-100(M)	0.5-7	16	16	100	127	CNM11	S006014C	ER11		US\$27.00
100-00-027	C20-ER16-50(M)	0.5-10	23	20	50	85	CNM16	S006014C	ER16	WM16	US\$27.00
100-00-028	C20-ER16-100(M)	0.5-10	23	20	100	135	CNM16	S006014C	ER16		US\$27.00
100-00-029	C20-ER16-150(M)	0.5-10	23	20	150	185	CNM16	S006014C	ER16	WM20	US\$28.50
100-00-030	C20-ER20-50(M)	1.0-13	28	20	50	88	CNM20	S008014C	ER20		US\$27.00
100-00-031	C20-ER20-100(M)	1.0-13	28	20	100	138	CNM20	S008014C	ER20	WM20	US\$27.00
100-00-032	C20-ER20-150(M)	1.0-13	28	20	150	188	CNM20	S008014C	ER20		US\$28.50
100-00-033	C25-ER20-50(M)	1.0-13	28	25	50	88	CNM20	S008014C	ER20	WM20	US\$27.00
100-00-034	C25-ER20-100(M)	1.0-13	28	25	100	138	CNM20	S008014C	ER20		US\$27.00
100-00-035	C25-ER20-150(M)	1.0-13	28	25	150	188	CNM20	S008014C	ER20		US\$28.50

HARLINGEN®

ER COLLET

- Exactly according to DIN 6499.
- Wide holding range of 1mm each collet (ER 11 is 0.5mm)
- True double angle for extreme concentricity.



ER11 L/D: 18.5mm/11.5mm

Order No.	Capacity dm(mm)	Unit Price
100-04-001	2.5-2.0	US\$4.93
100-04-002	3.0-2.5	US\$4.93
100-04-003	3.5-3.0	US\$4.93
100-04-004	4.0-3.5	US\$4.93
100-04-005	4.5-4.0	US\$4.93
100-04-006	5.0-4.5	US\$4.93
100-04-007	5.5-5.0	US\$4.93
100-04-008	6.0-5.5	US\$4.93
100-04-009	6.5-6.0	US\$4.93
100-04-010	7.0-6.5	US\$4.93

ER16 L/D: 27.5mm/17mm

Order No.	Capacity dm(mm)	Unit Price
100-04-011	3.0-2.0	US\$4.08
100-04-012	4.0-3.0	US\$4.08
100-04-013	5.0-4.0	US\$4.08
100-04-014	6.0-5.0	US\$4.08
100-04-015	7.0-6.0	US\$4.08
100-04-016	8.0-7.0	US\$4.08
100-04-017	9.0-8.0	US\$4.08
100-04-018	10.0-9.0	US\$4.08

ER20 L/D: 31.5mm/21.0mm

Order No.	Capacity dm(mm)	Unit Price
100-04-019	3.0-2.0	US\$4.08
100-04-020	4.0-3.0	US\$4.08
100-04-021	5.0-4.0	US\$4.08
100-04-022	6.0-5.0	US\$4.08
100-04-023	7.0-6.0	US\$4.08
100-04-024	8.0-7.0	US\$4.08
100-04-025	9.0-8.0	US\$4.08
100-04-026	10.0-9.0	US\$4.08
100-04-027	11.0-10.0	US\$4.08
100-04-028	12.0-11.0	US\$4.08
100-04-029	13.0-12.0	US\$4.08

HARLINGEN®

ER25 L/D: 34.0mm/26.0mm

Order No.	Capacity dm(mm)	Unit Price
100-04-030	3.0-2.0	US\$4.42
100-04-031	4.0-3.0	US\$4.42
100-04-032	5.0-4.0	US\$4.42
100-04-033	6.0-5.0	US\$4.42
100-04-034	7.0-6.0	US\$4.42
100-04-035	8.0-7.0	US\$4.42
100-04-036	9.0-8.0	US\$4.42
100-04-037	10.0-9.0	US\$4.42
100-04-038	11.0-10.0	US\$4.42
100-04-039	12.0-11.0	US\$4.42
100-04-040	13.0-12.0	US\$4.42
100-04-041	14.0-13.0	US\$4.42
100-04-042	15.0-14.0	US\$4.42
100-04-043	16.0-15.0	US\$4.42

ER32 L/D: 40.0mm/33.0mm

Order No.	Capacity dm(m)	Unit Price
100-04-044	3.0-2.0	US\$4.42
100-04-045	4.0-3.0	US\$4.42
100-04-046	5.0-4.0	US\$4.42
100-04-047	6.0-5.0	US\$4.42
100-04-048	7.0-6.0	US\$4.42
100-04-049	8.0-7.0	US\$4.42
100-04-050	9.0-8.0	US\$4.42
100-04-051	10.0-9.0	US\$4.42
100-04-052	11.0-10.0	US\$4.42
100-04-053	12.0-11.0	US\$4.42
100-04-054	13.0-12.0	US\$4.42
100-04-055	14.0-13.0	US\$4.42
100-04-056	15.0-14.0	US\$4.42
100-04-057	16.0-15.0	US\$4.42
100-04-058	17.0-16.0	US\$4.42
100-04-059	18.0-17.0	US\$4.42
100-04-060	19.0-18.0	US\$4.42
100-04-061	20.0-19.0	US\$4.42

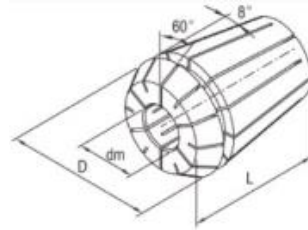
ER40 L/D: 46.0mm/41.0mm

Order No.	Capacity dm(m)	Unit Price
100-04-062	4.0-3.0	US\$5.27
100-04-063	5.0-4.0	US\$5.27
100-04-064	6.0-5.0	US\$5.27
100-04-065	7.0-6.0	US\$5.27
100-04-066	8.0-7.0	US\$5.27
100-04-067	9.0-8.0	US\$5.27
100-04-068	10.0-9.0	US\$5.27
100-04-069	11.0-10.0	US\$5.27
100-04-070	12.0-11.0	US\$5.27
100-04-071	13.0-12.0	US\$5.27
100-04-072	14.0-13.0	US\$5.27
100-04-073	15.0-14.0	US\$5.27
100-04-074	16.0-15.0	US\$5.27
100-04-075	17.0-16.0	US\$5.27
100-04-076	18.0-17.0	US\$5.27
100-04-077	19.0-18.0	US\$5.27
100-04-078	20.0-19.0	US\$5.27
100-04-079	21.0-20.0	US\$5.27
100-04-080	22.0-21.0	US\$5.27
100-04-081	23.0-22.0	US\$5.27
100-04-082	24.0-23.0	US\$5.27
100-04-083	25.0-24.0	US\$5.27
100-04-084	26.0-25.0	US\$5.27

HARLINGEN®

PRECISION ER COLLET

- Precision 0.005mm.
- Wide holding range of 1mm each collet (ER 11 is 0.5mm).
- True double angle for extreme concentricity.



ER11 L/D: 18.5mm/11.5mm

Order No.	Capacity dm(mm)	Unit Price
100-04-P01	2.5-2.0	US\$6.97
100-04-P02	3.0-2.5	US\$6.97
100-04-P03	3.5-3.0	US\$6.97
100-04-P04	4.0-3.5	US\$6.97
100-04-P05	4.5-4.0	US\$6.97
100-04-P06	5.0-4.5	US\$6.97
100-04-P07	5.5-5.0	US\$6.97
100-04-P08	6.0-5.5	US\$6.97
100-04-P09	6.5-6.0	US\$6.97
100-04-P10	7.0-6.5	US\$6.97

ER16 L/D: 27.5mm/17mm

Order No.	Capacity dm(mm)	Unit Price
100-04-P11	3.0-2.0	US\$6.12
100-04-P12	4.0-3.0	US\$6.12
100-04-P13	5.0-4.0	US\$6.12
100-04-P14	6.0-5.0	US\$6.12
100-04-P15	7.0-6.0	US\$6.12
100-04-P16	8.0-7.0	US\$6.12
100-04-P17	9.0-8.0	US\$6.12
100-04-P18	10.0-9.0	US\$6.12

ER20 L/D: 31.5mm/21.0mm

Order No.	Capacity dm(mm)	Unit Price
100-04-P19	3.0-2.0	US\$6.12
100-04-P20	4.0-3.0	US\$6.12
100-04-P21	5.0-4.0	US\$6.12
100-04-P22	6.0-5.0	US\$6.12
100-04-P23	7.0-6.0	US\$6.12
100-04-P24	8.0-7.0	US\$6.12
100-04-P25	9.0-8.0	US\$6.12
100-04-P26	10.0-9.0	US\$6.12
100-04-P27	11.0-10.0	US\$6.12
100-04-P28	12.0-11.0	US\$6.12
100-04-P29	13.0-12.0	US\$6.12

HARLINGEN®

ER25 L/D: 34.0mm/26.0mm

Order No.	Capacity dm(mm)	Unit Price
100-04-P30	3.0-2.0	US\$6.45
100-04-P31	4.0-3.0	US\$6.45
100-04-P32	5.0-4.0	US\$6.45
100-04-P33	6.0-5.0	US\$6.45
100-04-P34	7.0-6.0	US\$6.45
100-04-P35	8.0-7.0	US\$6.45
100-04-P36	9.0-8.0	US\$6.45
100-04-P37	10.0-9.0	US\$6.45
100-04-P38	11.0-10.0	US\$6.45
100-04-P39	12.0-11.0	US\$6.45
100-04-P40	13.0-12.0	US\$6.45
100-04-P41	14.0-13.0	US\$6.45
100-04-P42	15.0-14.0	US\$6.45
100-04-P43	16.0-15.0	US\$6.45

ER32 L/D: 40.0mm/33.0mm

Order No.	Capacity dm(mm)	Unit Price
100-04-P44	3.0-2.0	US\$6.45
100-04-P45	4.0-3.0	US\$6.45
100-04-P46	5.0-4.0	US\$6.45
100-04-P47	6.0-5.0	US\$6.45
100-04-P48	7.0-6.0	US\$6.45
100-04-P49	8.0-7.0	US\$6.45
100-04-P50	9.0-8.0	US\$6.45
100-04-P51	10.0-9.0	US\$6.45
100-04-P52	11.0-10.0	US\$6.45
100-04-P53	12.0-11.0	US\$6.45
100-04-P54	13.0-12.0	US\$6.45
100-04-P55	14.0-13.0	US\$6.45
100-04-P56	15.0-14.0	US\$6.45
100-04-P57	16.0-15.0	US\$6.45
100-04-P58	17.0-16.0	US\$6.45
100-04-P59	18.0-17.0	US\$6.45
100-04-P60	19.0-18.0	US\$6.45
100-04-P61	20.0-19.0	US\$6.45

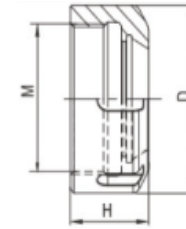
ER40 L/D: 46.0mm/41.0mm

Order No.	Capacity dm(mm)	Unit Price
100-04-P62	4.0-3.0	US\$7.30
100-04-P63	5.0-4.0	US\$7.30
100-04-P64	6.0-5.0	US\$7.30
100-04-P65	7.0-6.0	US\$7.30
100-04-P66	8.0-7.0	US\$7.30
100-04-P67	9.0-8.0	US\$7.30
100-04-P68	10.0-9.0	US\$7.30
100-04-P69	11.0-10.0	US\$7.30
100-04-P70	12.0-11.0	US\$7.30
100-04-P71	13.0-12.0	US\$7.30
100-04-P72	14.0-13.0	US\$7.30
100-04-P73	15.0-14.0	US\$7.30
100-04-P74	16.0-15.0	US\$7.30
100-04-P75	17.0-16.0	US\$7.30
100-04-P76	18.0-17.0	US\$7.30
100-04-P77	19.0-18.0	US\$7.30
100-04-P78	20.0-19.0	US\$7.30
100-04-P79	21.0-20.0	US\$7.30
100-04-P80	22.0-21.0	US\$7.30
100-04-P81	23.0-22.0	US\$7.30
100-04-P82	24.0-23.0	US\$7.30
100-04-P83	25.0-24.0	US\$7.30
100-04-P84	26.0-25.0	US\$7.30

ER NUT

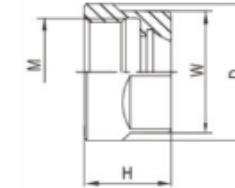
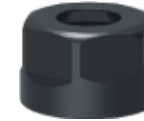
Style B

Order No.	Model	Size(mm)			Wrench	For Collet	Unit Price
		D	M	H			
100-04-085	CN25B	42	M32x1.5	20	YER25B	ER25	US\$10.00
100-04-086	CN32B	50	M40x1.5	23	YER32B	ER32	US\$10.00
100-04-087	CN40B	60	M50x1.5	26	YER40B	ER40	US\$11.67



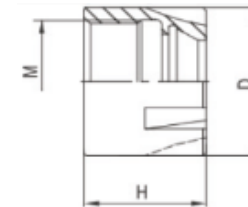
Style HS

Order No.	Model	Size(mm)				Wrench	For Collet	Unit Price
		D	M	H	W			
100-04-088	CN11HS	19	M14x0.75	11.3	17	W17D	ER11	US\$12.50
100-04-089	CN16HS	28	M22x1.5	17.5	25	W25D	ER16	US\$12.50
100-04-090	CN20HS	34	M25x1.5	19	30	W30D	ER20	US\$12.50



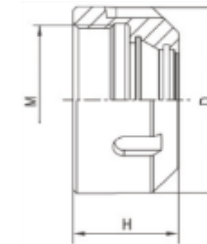
Style M

Order No.	Model	Size(mm)			Wrench	For Collet	Unit Price
		D	M	H			
100-04-091	CNM11	16	M13x0.75	12	WM11	ER11	US\$12.50
100-04-092	CNM16	23	M19x1.0	18	WM16	ER16	US\$12.50
100-04-093	CNM20	28	M24x1.0	19	WM20	ER20	US\$12.50



Style Coolant

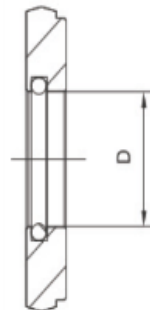
Order No.	Model	Size(mm)			Wrench	For Collet	Unit Price
		D	M	H			
100-04-094	CN20C	34	M25x1.5	24	W30D	ER20	US\$15.00
100-04-095	CN32C	50	M40x1.5	28	YER32B	ER32	US\$15.00



SEALING DISK

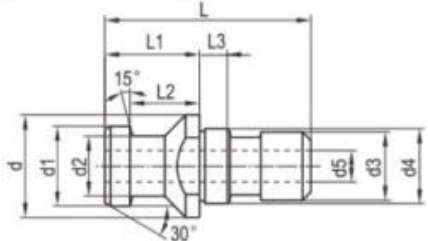
• Used together with ER collet or ER tap collet.

Order No.	Model	D	For Collet	Unit Price
100-04-096	DER20C-6	6	ER20	US\$10.00
100-04-097	DER20C-6.5	6.5	ER20	US\$10.00
100-04-098	DER20C-7	7	ER20	US\$10.00
100-04-099	DER20C-8	8	ER20	US\$10.00
100-04-100	DER20C-8.5	8.5	ER20	US\$10.00
100-04-101	DER20C-9	9	ER20	US\$10.00
100-04-102	DER20C-10	10	ER20	US\$10.00
100-04-103	DER32C-6	6	ER32	US\$10.00
100-04-104	DER32C-6.5	6.5	ER32	US\$10.00
100-04-105	DER32C-7	7	ER32	US\$10.00
100-04-106	DER32C-8	8	ER32	US\$10.00
100-04-107	DER32C-8.5	8.5	ER32	US\$10.00
100-04-108	DER32C-9	9	ER32	US\$10.00
100-04-109	DER32C-10	10	ER32	US\$10.00
100-04-110	DER32C-12	12	ER32	US\$10.00
100-04-111	DER32C-12.5	12.5	ER32	US\$10.00
100-04-112	DER32C-14	14	ER32	US\$10.00
100-04-113	DER32C-15	15	ER32	US\$10.00
100-04-114	DER32C-16	16	ER32	US\$10.00



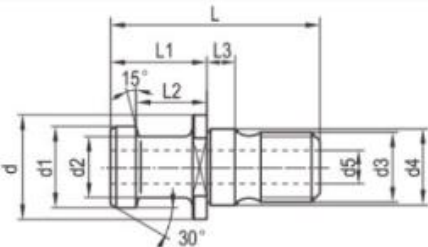
PULL STUDS

According to DIN69872



Order No.		For Taper Shank	Model	Size(mm)										Unit Price	
without hole	with hole			L	L1	L2	L3	d	d1	d2	d3	d4	d5	without hole	with hole
100-00-036	-	SK30	D30	44	24	19	5	17	13	9	M12	13	-	US\$4.50	
100-00-038	100-00-037	SK40	D40	54	26	20	7	23	19	14	M16	17	7	US\$4.50	US\$5.40
100-00-040	100-00-039	SK50	D50	74	34	25	10	36	28	21	M24	25	11.5	US\$5.40	US\$8.00

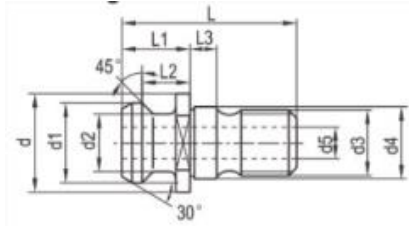
According to ISO7388/2 A



Order No.		For Taper Shank	Model	Size(mm)										Unit Price	
without hole	with hole			L	L1	L2	L3	d	d1	d2	d3	d4	d5	without hole	with hole
100-00-056	-	ISO/SK30	LDA30	44	24	19	5	17	12	8	M12	13	-	US\$4.50	
100-00-058	100-00-059	ISO/SK40	LDA40	54	26	20	7	23	19	14	M16	17	7	US\$4.50	US\$5.40
100-00-060	100-00-061	ISO/SK50	LDA50	74	34	25	10	36	28	21	M24	25	11.5	US\$5.40	US\$7.20

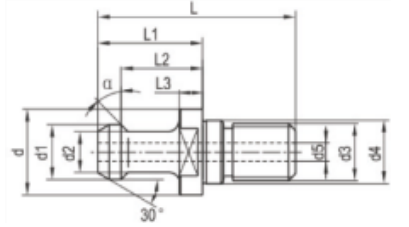
HARLINGEN®

According to ISO7388/2 B



Order No.		For Taper Shank	Model	Size(mm)										Unit Price	
without hole	with hole			L	L1	L2	L3	d	d1	d2	d3	d4	d5	without hole	with hole
100-00-062	-	ISO/SK30	LDB30	31.8	11.8	8.1	5	16.5	13.3	9.3	M12	13	-	US\$4.50	
100-00-064	100-00-065	ISO/SK40	LDB40	44.5	16.4	11.15	7	22.5	18.95	12.95	M16	17	7	US\$4.50	US\$5.40
100-00-066	100-00-067	ISO/SK50	LDB50	66.5	25.55	17.95	10	36	29.1	19.6	M24	25	11.5	US\$5.40	US\$7.20

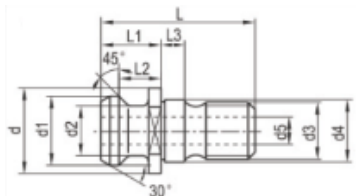
According to MAS403



Order No.		For Taper Shank	Model	Size(mm)										Unit Price		
without hole	with hole			L	L1	L2	L3	d	d1	d2	d3	d4	α	d5	without hole	with hole
100-00-042	-	BT30	D30T-I	43	23	18	4.5	16.5	11	7	M12	12.5	45°	-	US\$5.00	
100-00-044	-	BT30	D30T-II	43	23	18	4.5	16.5	11	7	M12	12.5	30°	-	US\$5.00	
100-00-046	100-00-041	BT40	D40T-I	60	35	28	6	23	15	10	M16	17	45°	4	US\$5.00	US\$6.00
100-00-048	100-00-043	BT40	D40T-II	60	35	28	6	23	15	10	M16	17	30°	4	US\$4.50	US\$5.40
100-00-050	100-00-045	BT50	D50T-I	85	45	35	10	38	23	17	M24	25	45°	7	US\$6.00	US\$8.00
100-00-052	100-00-047	BT50	D50T-II	85	45	35	10	38	23	17	M24	25	30°	7	US\$6.00	US\$8.00

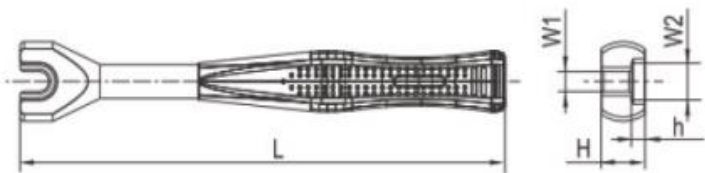
HARLINGEN®

MAZAK/BT style



Order No.		For Taper Shank	Model	Size(mm)										Unit Price	
without hole	with hole			L	L1	L2	L3	d	d1	d2	d3	d4	d5	without hole	with hole
100-00-068	100-00-069	BT40	MAZAK/BT40	44.1	19.1	14.02	5	22	18.8	12.45	M16	17	7	US\$4.75	US\$5.70
100-00-070	100-00-071	BT50	MAZAK/BT50	65.2	25.2	17.58	8	37	29	20.83	M24	25	10	US\$5.70	US\$7.60

PULL STUDS WRENCH

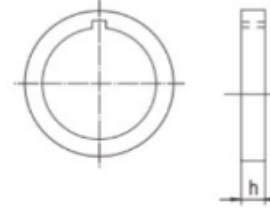


Order No.	For Taper Shank	Model	Size(mm)					Torque(N.m)	Weight(Kg)	Unit Price
			L	H	h	W1	W2			
100-00-053	BT30	PW-8T30	210	16	5	13	7	<80	0.31	US\$6.93
100-00-054	BT40	PW-8T40	230	25	6	19	10	<150	0.43	US\$7.58
100-00-055	BT50	PW-8T50	250	33	10	30	17	<280	0.84	US\$11.92

HARLINGEN®

WASHERS FOR SLOTTING CUTTER HOLDER

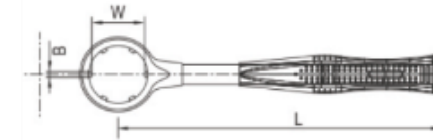
Order No.	Model	H(mm)	Description	Unit Price
100-10-S01	SD13	3, 5, 7, 8, 10, 12	suitable for XS13 series holder	US\$0.93
100-10-S02	SD16		suitable for XS16 series holder	US\$0.93
100-10-S03	SD22		suitable for XS22 series holder	US\$1.17
100-10-S04	SD27		suitable for XS27 series holder	US\$1.17
100-10-S05	SD32		suitable for XS32 series holder	US\$1.17
100-10-S06	SD40		suitable for XS40 series holder	US\$1.17
100-10-S07	SD50		suitable for XS50 series holder	US\$2.22



ER NUT WRENCH

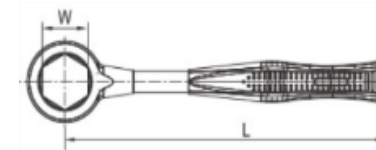
For B style nut

Order No.	Model	Size(mm)			For Collet	Unit Price
		L	W	B		
100-04-115	PW-ER25B	250	35	5	ER25	US\$9.75
100-04-116	PW-ER32B	270	45	5	ER32	US\$9.75
100-04-117	PW-ER40B	300	57	5	ER40	US\$13.67

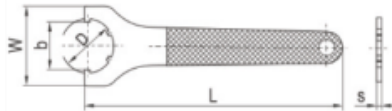


For HS style nut

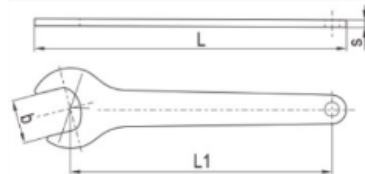
Order No.	Model	Size(mm)		For Collet	Unit Price
		L	W		
100-04-118	PW-ER16HS	225	25	ER16	US\$7.58
100-04-119	PW-ER20HS	240	30	ER20	US\$7.58



Order No.	Model	Size (mm)					Unit Price
		L	L1	D	b	s	
100-04-120	W17D	176.8	150	40	17	5	US\$3.50
100-04-121	W25D	194.2	160	52	25	5	US\$3.50
100-04-122	W30D	215	180	55	30	5	US\$3.50

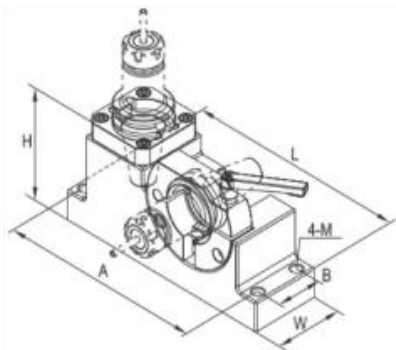


Order No.	Model	Size (mm)					Unit Price
		L	b	D	w	s	
100-04-123	YER25B	210	38	43	63	5	US\$5.42
100-04-124	YER32B	250	45	51	75	5	US\$6.07
100-04-125	YER40B	290	58	64	90	6	US\$7.15



TOOLING SETUP FIXTURE

- Made of quality aluminium alloy steel.



Order No.	Model	For Taper Shank	Size(mm)						Unit Price
			L	H	W	A	B	M	
100-00-072	T-M/BT30	#30	200	96	64	184	40	M8	US\$180.00
100-00-073	T-M/BT40	#40	272	133	85	248	55	M12	US\$180.00
100-00-074	T-M/BT50	#50	364	168	125	338	85	M12	US\$225.00
100-00-075	T-M/HSK63	HSK63	272	135	85	248	55	M12	US\$225.00
100-00-076	T-M/HSK100	HSK100	364	170	125	338	85	M12	US\$270.00

ADD: C-8F NO.6, HANGKONG ROAD, FENGDE INTERNATIONAL PLAZA, CHENGDU, SICHUAN, CHINA

TEL: 028-86741971 86741739 FAX: 028-86756837 86750017

E-MAIL: sales@sctools.com service@sctools.com